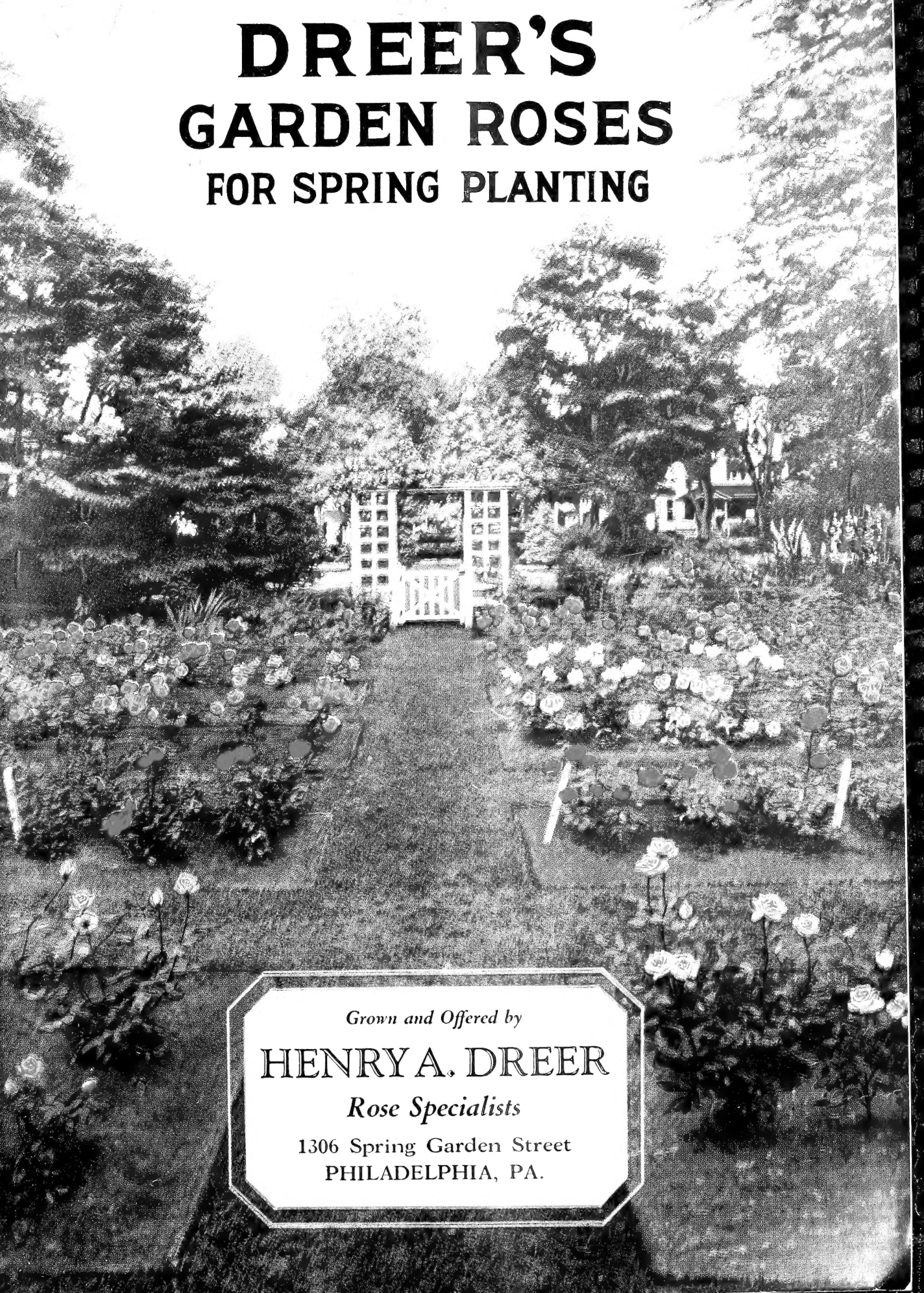


# Historic, archived document

Do not assume content reflects current scientific knowledge, policies, or practices.



# DREER'S GARDEN ROSES FOR SPRING PLANTING



*Grown and Offered by*

**HENRY A. DREER**

*Rose Specialists*

1306 Spring Garden Street  
PHILADELPHIA, PA.

# DREER'S GARDEN ROSES



**The attention of our customers is respectfully called to the following directions, which will, if followed, be an aid to purchasers as well as ourselves.**

**TIME OF SHIPMENT.**—All plants, whether the stock is seasonable or not, are forwarded as soon after receipt of the order as possible. Many of our customers who have facilities for their care, purposely order plants out of season so as to have them on hand when planting conditions are favorable. As we do not know whether you have such facilities, you should specify on the order when you want shipment made, if you do not wish them at once.

**RESERVATION OF PLANTS FOR PLANTING TIME.**—While we try as far as possible to reserve plants on orders placed in advance, to be sent at planting time, it must be borne in mind that plants are highly perishable, and cannot be packed and stored for future shipment like most other kinds of merchandise. Weather conditions frequently interfere with making such reservations at the time the order is received, and when Spring opens there is usually such a congestion of orders for immediate shipment that it is impossible to make reservations. Customers may rely on us doing our utmost in making reservations, but if we fail we assume no responsibility, and all advance orders are accepted on these conditions only.

**PACKING.**—We make no charge for boxes or packing on Express, Freight or steamboat shipments. The extra labor of packing Parcel Post shipments is included in the additional cost noted below.

**HOW WE SHIP.**—All Plants, Roots and Bulbs are forwarded by Express, purchaser paying charges. For those of our customers who prefer to receive their goods by Parcel Post, we will be pleased to forward in this manner such Plants, Roots and Bulbs as can be sent in this way at the following additional cost, to cover postage and special packing, which must be added to the value of each order for Plants, Roots or Bulbs:

5 per cent. additional to the following States: Conn., Del., D. C., Md., Mass., N. H., N. J., N. Y., Pa., R. I., Vt., Va., W. Va.

10 per cent. additional to the following States: Ala., Ark., Fla., Ga., Ill., Ind., Ia., Kan., Ky., La., Me., Mich., Minn., Miss., Mo., Neb., N. C., N. D., Ohio, Okla., S. C., S. D., Tenn., Tex., Wis.

15 per cent. additional to the following States: Ariz., Cal., Colo., Idaho, Mont., Nev., N. M., Ore., Utah, Wash., Wyo.

We recommend our customers to have their orders forwarded by express, as our experience shows that this method is usually the most satisfactory, except on small packages.

**SAFE ARRIVAL OF PACKAGES.**—We guarantee the safe arrival of all goods sent by Express or Mail to points within the United States. If a package sent by Express or Mail is injured or lost we will replace it as soon as informed of the fact. Goods sent in any other way are solely at purchaser's risk. Frequently it happens that orders never reach us or are without signature. When customers fail to receive their packages in a reasonable time they should inform us, and at the same time send a copy of their order and any other information necessary to trace the goods. Claims for damage must be made on receipt of goods. We do not hold ourselves responsible for failures after delivery of the goods in good condition.

**REMITTANCES** should be made by Post-office Money Order, Drafts on Philadelphia or New York Banks, or Express Money Orders. We disclaim all responsibility when remittances are not made as above directed. Where it is not possible to obtain these, the letter should be registered. Postage stamps will be found a convenient method of remitting for small amounts, and can be used by us to advantage. Coin should not be sent by mail.

**CASH WITH ORDER.**—Please send money with the order sufficient to cover the whole bill. We decline sending goods "Collect on Delivery" unless remittance be made on account to guarantee acceptance.

**NAME AND ADDRESS.**—Please remember to write on each order your **Name, Post-Office, County and State**, also give number of street or P. O. Box as distinctly as possible, also the **Nearest Express Office**, or, if on a stage route, send us special directions.

**NON-WARRANTY.**—Most of the failures with seeds, plants and bulbs are due to causes entirely beyond our control, such as unfavorable weather or soil conditions, too deep or too shallow planting, etc., which renders it impossible for us to guarantee success, and although we take all possible care to supply only such goods as will, under proper conditions, produce satisfactory results, we still give no warranty as to description, quality or productiveness of any of the seeds, plants or bulbs we send out, and will not be in any way responsible for the crop, and every order for articles named in this Catalogue will be executed on these conditions only. It must however, be plain to every one who gives the matter the slightest thought that it is to our best interest to send out only such stock, as will not only grow, but prove true to name and description.

## HENRY A. DREER

1306 Spring Garden Street

Philadelphia, Pa.





# INDEX

Hybrid Tea—H. T.  
Tree Hybrid Tea—Tree H. T.  
Climbing Hybrid Tea—Climb. H. T.  
Hybrid Perpetual—H. P.  
Tree Hybrid Perpetual—Tree H. P.

Climbing Hybrid Perpetual—Climb. H. P.  
Dwarf Tree—Dwf. Tree  
Baby Rambler—Baby  
Polyantha—Poly.  
Tea—Tea

Rugosa—Rug.  
Hybrid Rugosa—Hy. Rug.  
Rambler—Ramb.  
Bourbon—Bourb.  
Climbing—Climb.

Brier—Brier  
Moss—Moss  
Hybrid Brier—Hy. Brier  
Species—Species  
Tender Climber—Tend. Climb.

|                                   | Page      |
|-----------------------------------|-----------|
| Admiral Ward, H. T.               | 14        |
| Agnes, Rug.                       | 25        |
| Albertine, Ramb.                  | 27        |
| Alida Lovett, Ramb.               | 28        |
| Amelie de Bethune, H. T.          | 14        |
| America, H. T.                    | 14        |
| American Beauty, H. P.            | 22        |
| American Beauty, Climb.           | 28        |
| American Pillar, Ramb.            | 28        |
| Amy Robsart, Brier.               | 24        |
| Angele Pernet, H. T.              | 4         |
| Anna de Diesbach, H. P.           | 22        |
| Anne de Geirstein, Brier.         | 24        |
| Annie Laurie, H. T.               | 14        |
| Antoine Rivoire, H. T.            | 14        |
| Arthur R. Goodwin, H. T.          | 14        |
| Aspirant Marcel Rouyer, H. T.     | 14        |
| Austrian Copper, Brier.           | 24        |
| <b>Baroness Rothschild, H. P.</b> | <b>22</b> |
| Beaute de Lyon, Brier             | 24        |
| Bedford Crimson, H. T.            | 10        |
| Belle Cuivre, H. T.               | 14        |
| Bess Lovett, Ramb.                | 28        |
| Betty, H. T.                      | 14        |
| Betty Uprichard, H. T.            | 14        |
| Betty Uprichard, Tree H. T.       | 26        |
| Bishop Darlington, Ramb.          | 27        |
| Black Boy, Climb. H. T.           | 26        |
| Blanc Double de Coubert, Rug.     | 25        |
| Blanche Moreau, Moss.             | 24        |
| Bloomfield Exquisite, Ramb.       | 27        |
| Bradwardine, Brier.               | 24        |
| Buisson d'Or, Hv. Brier.          | 25        |
| <b>Candeur Lyonnaise, H. P.</b>   | <b>22</b> |
| Captain Christy, H. P.            | 22        |
| Caroline Testout, H. T.           | 11        |
| Caroline Testout, Climb. H. T.    | 26        |
| Cecile Brunner, Poly.             | 23        |
| Centifolia, Species.              | 25        |
| Chateau de Clos Vougeot, H. T.    | 14        |
| Chatillon Rose, Baby              | 23        |
| Chatillon Rose, Dwf. Tree.        | 26        |
| Cheerful, H. T.                   | 14        |
| Christine Wright, Ramb.           | 28        |
| Cleveland, H. T.                  | 14        |
| Clio, H. P.                       | 22        |
| Columbia, H. T.                   | 14        |
| Columbia, Tree H. T.              | 26        |
| Comtesse de Cassagne, H. T.       | 14        |
| Conrad Ferdinand Meyer, Rug.      | 25        |
| Constance, H. T.                  | 14        |
| Constance Casson, H. T.           | 14        |
| Crested Moss, Moss.               | 24        |
| Crusader, H. T.                   | 14        |
| Cuba, H. T.                       | 4         |
| <b>Dame Edith Helen, H. T.</b>    | <b>4</b>  |
| Diadem, H. T.                     | 14        |
| Doris Dickson, H. T.              | 10        |
| Doris Traylor, H. T.              | 6         |
| Dorothy Perkins, Ramb.            | 28        |
| Dr. E. M. Mills, Hv. Rug.         | 22        |
| Dr. Robert Huey, Ramb.            | 28        |
| Dr. W. Van Fleet, Ramb.           | 28        |
| Duchess of Athol, H. T.           | 10        |
| Duchess of Wellington, H. T.      | 12        |
| Duchess of York, H. T.            | 10        |
| <b>Edel, H. T.</b>                | <b>14</b> |
| Edgar M. Burnett, H. T.           | 14        |
| Eldorado, H. T.                   | 15        |
| Elegante, H. T.                   | 15        |
| Else Poulsen, Poly.               | 23        |
| Elsie Beckwith, H. T.             | 15        |
| Emile Charles, H. T.              | 15        |
| Emily Gray, Ramb.                 | 27        |
| Emma Wright, H. T.                | 15        |
| E. P. H. Kingma, H. T.            | 15        |
| Erna Tschendorff, Baby            | 23        |
| Ernestine Cosme, Ramb.            | 27        |
| Ethel James, H. T.                | 15        |
| Etienne Rebeillard, H. T.         | 15        |
| Etoile de Feu, H. T.              | 15        |
| Etoile de France, H. T.           | 15        |
| Etoile de Hollande, H. T.         | 15        |
| Excelsa, Ramb.                    | 29        |
| <b>Felicity, H. T.</b>            | <b>15</b> |
| Feu Joseph Looymans, H. T.        | 15        |
| F. J. Grootendorst, Rug.          | 25        |
| Florence L. Izzard, H. T.         | 15        |
| Florence Pemberton, H. T.         | 15        |
| Frances Gaunt, H. T.              | 15        |
| Francis Scott Key, H. T.          | 15        |
| Frank Dunlop, H. T.               | 15        |
| Frank Reader, H. T.               | 8         |
| Frau Karl Druschki, H. P.         | 22        |
| Frau Karl Druschki, Tree H. P.    | 26        |

|  | Page      |
|--|-----------|
| Gardenia, Ramb.                          | 29        |
| General Jacqueminot, H. P.               | 22        |
| General MacArthur, H. T.                 | 15        |
| General MacArthur, Tree H. T.            | 26        |
| George Arends, H. P.                     | 22        |
| George C. Waud, H. T.                    | 15        |
| George C. Waud Tree H. T.                | 26        |
| George Elger, Baby                       | 23        |
| Gloire de Chedane Guinnoiseau, H. P.     | 22        |
| Gloire de Dijon, Tend. Climb.            | 26        |
| Golden Bush, Hy. Brier.                  | 25        |
| Golden Emblem, H. T.                     | 15        |
| Golden Ophelia, H. T.                    | 15        |
| Golden Vision, Tend. Climb.              | 26        |
| Goorgeous, H. T.                         | 15        |
| Grange Colomb, H. T.                     | 15        |
| Gruss An Aachen, Poly.                   | 23        |
| Gruss An Aachen, Dwf. Tree.              | 26        |
| Gruss an Teplitz, H. T.                  | 23        |
| Gruss an Teplitz, Tree H. T.             | 26        |
| Gwen Nash, Tend. Climb.                  | 26        |
| <b>Hadley, H. T.</b>                     | <b>12</b> |
| Hansa, Rug.                              | 25        |
| Harrison's Yellow, Brier.                | 24        |
| Harry Kirk, Tea.                         | 24        |
| Henry Martin, Moss.                      | 24        |
| Hermosa, Bourb.                          | 23        |
| Hiawatha, Ramb.                          | 29        |
| Hoosier Beauty, H. T.                    | 15        |
| Hoosier Beauty, Climb. H. T.             | 26        |
| Hugonis, Species.                        | 25        |
| H. V. Machin, H. T.                      | 15        |
| H. V. Machin, Climb. H. T.               | 26        |
| <b>Ideal, Baby.</b>                      | <b>23</b> |
| Imperial Potentate, H. T.                | 12        |
| Independence Day, H. T.                  | 15        |
| Independence Day, Tree H. T.             | 26        |
| Irish Charity, H. T.                     | 6         |
| Irish Charm, H. T.                       | 6         |
| Irish Courage, H. T.                     | 6         |
| Irish Elegance, H. T.                    | 15        |
| Irish Fireflame, H. T.                   | 15        |
| Irish Hope, H. T.                        | 6         |
| Irish Morn, H. T.                        | 6         |
| Irish Sweetness, H. T.                   | 6         |
| Isobel H. T.                             | 15        |
| <b>Jacotte, Ramb.</b>                    | <b>27</b> |
| J. C. M. Mensing, H. T.                  | 10        |
| John Russell, H. T.                      | 10        |
| Jonkheer J. L. Mock, H. T.               | 15        |
| Jonkheer J. L. Mock, Tree H. T.          | 26        |
| J. Otto Thilow, H. T.                    | 10        |
| Joseph Hill, H. T.                       | 15        |
| Josephine Thomas, H. T.                  | 16        |
| Juliet, Brier.                           | 24        |
| <b>Kaiserin Augusta Victoria, H. T.</b>  | <b>16</b> |
| Kaiserin Augusta Victoria, Tree H. T.    | 26        |
| Kaiserin Augusta Victoria, Climb. H. T.  | 26        |
| Katherine Zeimet, Baby                   | 23        |
| Killarney, H. T.                         | 16        |
| Killarney Brilliant, H. T.               | 16        |
| Killarney Double White, H. T.            | 16        |
| Killarney Double White, Tree H. T.       | 26        |
| Killarney Queen, H. T.                   | 16        |
| Kirsten Poulsen, Poly.                   | 23        |
| K. of K. (Kitchener of Khar-toum), H. T. | 16        |
| Kitty Kininmonth, Tend. Climb.           | 26        |
| <b>Lady Alice Stanley, H. T.</b>         | <b>16</b> |
| Lady Alice Stanley, Tree H. T.           | 26        |
| Lady Ashtown, H. T.                      | 16        |
| Lady Ashtown, Climb. H. T.               | 26        |
| Lady Dixon Hartland, H. T.               | 10        |
| Lady Florence Stronge, H. T.             | 6         |
| Lady Hillingdon, Tea.                    | 24        |
| Lady Hillingdon, Climb. Tea.             | 26        |
| Lady Inchiquin, H. T.                    | 16        |
| Lady Margaret Stewart, H. T.             | 4         |
| Lady Mary Elizabeth, H. T.               | 10        |
| Lady Penzance, Brier.                    | 24        |
| Lady Pirrie, H. T.                       | 16        |
| Lady Roundway, H. T.                     | 11        |
| Lady Ursula, H. T.                       | 11        |
| Lady Ursula, Tree H. T.                  | 26        |
| Lafayette, Baby                          | 23        |
| Laurent Carle, H. T.                     | 16        |
| Le Marne, Baby                           | 23        |
| Le Reve, Ramb.                           | 27        |
| Leslie Pidgeon, H. T.                    | 11        |

|                                       | Page      |
|---------------------------------------|-----------|
| Lord Charlemont, H. T.                | 6         |
| Lord Lambourne, H. T.                 | 6         |
| Lord Penzance, Brier.                 | 24        |
| Los Angeles, H. T.                    | 12        |
| Los Angeles, Climb. H. T.             | 26        |
| Los Angeles, Tree H. T.               | 26        |
| Louise Catherine Breslau, H. T.       | 16        |
| Louise Walter, Baby                   | 23        |
| Lulu, H. T.                           | 16        |
| <b>Mabel Lynas, H. T.</b>             | <b>6</b>  |
| Mabel Morse, H. T.                    | 16        |
| Magna Charta, H. P.                   | 22        |
| Magna Charta, Tree H. P.              | 26        |
| Maman Cochet, Tea.                    | 24        |
| Marechal Neil, Tend. Climb.           | 26        |
| Margaret Dickson Hamill, H. T.        | 16        |
| Margaret McGredy, H. T.               | 8         |
| Marion Cran, H. T.                    | 7         |
| Marquise de Siney, H. T.              | 16        |
| Mary, Countess of Ilchester, H. T.    | 16        |
| Mary Lovett, Ramb.                    | 29        |
| Mary Pickford, H. T.                  | 8         |
| Mary Wallace, Ramb.                   | 29        |
| Mermaid, Ramb.                        | 27        |
| Miss Cynthia Forde, H. T.             | 16        |
| Miss Cynthia Forde, Tree H. T.        | 26        |
| Miss Edith Cavell, Baby               | 23        |
| Miss Lolita Armour, H. T.             | 16        |
| Miss Lolita Armour, Climb. H. T.      | 26        |
| Miss Marion Manifold, Tend. Climb.    | 26        |
| Miss Theresa Morley, H. T.            | 8         |
| Mme. Abel Chatenay, H. T.             | 18        |
| Mme. Alexandre Drex, H. T.            | 16        |
| Mme. Albert Barbier, H. P.            | 22        |
| Mme. Butterfly, H. T.                 | 18        |
| Mme. Butterfly, Tree H. T.            | 26        |
| Mme. Caroline Testout, Tree H. T.     | 26        |
| Mme. Charles Lutaud, H. T.            | 18        |
| Mme. Edmond Rostand, H. T.            | 18        |
| Mme. Edouard Herriot, H. T.           | 12        |
| Mme. Edouard Herriot, Tree H. T.      | 26        |
| Mme. Edouard Herriot, Climb. H. T.    | 26        |
| Mme. Jenny, Ramb.                     | 27        |
| Mme. Jules Bouche, H. T.              | 12        |
| Mme. Leon Pain, H. T.                 | 18        |
| Mme. Melanie Soupert, H. T.           | 18        |
| Mme. Norbert Levavasseur, Baby.       | 23        |
| Mme. Poincare, H. T.                  | 18        |
| Mme. Ravary, H. T.                    | 18        |
| Mme. Segond Weber, H. T.              | 18        |
| Monsieur Julien Potin, H. T.          | 4         |
| Moyesi, Species.                      | 25        |
| Mrs. Aaron Ward, H. T.                | 18        |
| Mrs. Aaron Ward, Tree H. T.           | 26        |
| Mrs. Aaron Ward, Climb. H. T.         | 26        |
| Mrs. A. R. Barraclough, H. T.         | 8         |
| Mrs. Arthur Robert Waddell, H. T.     | 11        |
| Mrs. Beatty, H. T.                    | 18        |
| Mrs. Beckwith, H. T.                  | 18        |
| Mrs. Charles Bell, H. T.              | 18        |
| Mrs. Charles Lamplough, H. T.         | 18        |
| Mrs. Charles Russell, H. T.           | 18        |
| Mrs. Cutbush, Baby                    | 23        |
| Mrs. C. W. Edwards, H. T.             | 6         |
| Mrs. Dunlop Best, H. T.               | 18        |
| Mrs. Erskine Pembroke Thom, H. T.     | 8         |
| Mrs. Franklin Dennison, H. T.         | 18        |
| Mrs. F. W. Vanderbilt, H. T.          | 19        |
| Mrs. Henry Bowles, H. T.              | 11        |
| Mrs. Henry Morse, H. T.               | 19        |
| Mrs. Henry Morse, Tree H. T.          | 26        |
| Mrs. H. S. Prentiss Nichols, H. T.    | 19        |
| Mrs. John Laing, H. P.                | 22        |
| Mrs. John Laing, Tree H. P.           | 26        |
| Mrs. Lovell Swisher, H. T.            | 4         |
| Mrs. R. B. Moloney, H. T.             | 7         |
| Mrs. Redford, H. T.                   | 19        |
| Mrs. R. G. Sharman Crawford, H. P.    | 22        |
| Mrs. S. K. Rindge, H. T.              | 18        |
| Mrs. Tom Smith, H. T.                 | 11        |
| Mrs. Wakefield Christie Miller, H. T. | 19        |
| Mrs. Wemyss Quin, H. T.               | 19        |
| Mrs. W. F. Nickerson, H. T.           | 7         |
| Mrs. William C. Egan, H. T.           | 12        |
| <b>Nederland, H. T.</b>               | <b>19</b> |
| Norman Lambert, H. T.                 | 7         |
| <b>Oliver Mee, H. T.</b>              | <b>11</b> |
| Ophelia, H. T.                        | 19        |
| Ophelia, Tree H. T.                   | 26        |

|   | Page      |
|---|-----------|
| Orleans, Baby.                            | 23        |
| Orleans, Tree Baby.                       | 26        |
| <b>Padre, H. T.</b>                       | <b>12</b> |
| Papa Gouchault, Ramb.                     | 29        |
| Patience, H. T.                           | 7         |
| Paul Neyron, H. P.                        | 22        |
| Paul's Lemon Pillar, Tend. Climb.         | 26        |
| Paul's Scarlet Climber, Ramb.             | 29        |
| Pax Labor, H. T.                          | 19        |
| Persian Yellow, Brier.                    | 24        |
| Phyllis Bide, Ramb.                       | 27        |
| Pink F. J. Grootendorst, Rug.             | 25        |
| Pink Pearl, H. T.                         | 11        |
| Premier, H. T.                            | 11        |
| Premier, Tree H. T.                       | 26        |
| President Cherieux, H. T.                 | 19        |
| Prince Camille de Rohan, H. P.            | 22        |
| Prince de Bulgarie, H. T.                 | 19        |
| Princess Adelaide, Moss.                  | 24        |
| <b>Queen of Fragrance, H. T.</b>          | <b>20</b> |
| <b>Radiance, H. T.</b>                    | <b>12</b> |
| Radiance, Tree H. T.                      | 26        |
| Red Radiance, H. T.                       | 12        |
| Red Radiance, Tree H. T.                  | 26        |
| Red Letter Day, H. T.                     | 20        |
| Reims, H. T.                              | 20        |
| Rev. F. Page Roberts, H. T.               | 11        |
| Roselandia, H. T.                         | 11        |
| Rose Marie, H. T.                         | 20        |
| Rose Marie, Tree H. T.                    | 26        |
| Rose Marie, Climb. H. T.                  | 26        |
| Roseric, Ramb.                            | 29        |
| Royal Red, H. T.                          | 20        |
| Royal Scot, H. T.                         | 11        |
| Rugosa, Rug.                              | 25        |
| Rugosa Alba, Rug.                         | 25        |
| Ruth, H. T.                               | 6         |
| <b>Salet, Moss.</b>                       | <b>24</b> |
| Sarah Van Fleet, Hy. Rug.                 | 22        |
| Sensation, H. T.                          | 20        |
| Shot Silk, H. T.                          | 20        |
| Silver Moon, Ramb.                        | 29        |
| Sir David Davis, H. T.                    | 7         |
| Sir Thomas Lipton, Rug.                   | 25        |
| Solarium, Ramb.                           | 27        |
| Souvenir de Cladius Denoyal, Tend. Climb. | 26        |
| Souvenir de Claudius Pernet, H. T.        | 12        |
| Souvenir de Claudius Pernet, Tree H. T.   | 26        |
| Souvenir de Georges Beckwith, H. T.       | 20        |
| Souvenir de Georges Pernet, H. T.         | 12        |
| Souvenir de Georges Pernet, Tree H. T.    | 26        |
| Souvenir de H. A. Verschuren, H. T.       | 20        |
| Souvenir de H. A. Verschuren, Tree H. T.  | 26        |
| Souvenir de H. A. Verschuren, Climb H. T. | 26        |
| Star of Persia, Ramb.                     | 27        |
| Sunburst, H. T.                           | 20        |
| Superba, Baby.                            | 23        |
| <b>Tausendschoen, Ramb.</b>               | <b>29</b> |
| Templar, H. T.                            | 20        |
| The Beacon, Ramb.                         | 27        |
| The Queen Alexandra, H. T.                | 20        |
| <b>Ulrich Brunner, H. P.</b>              | <b>22</b> |
| Una Wallace, H. T.                        | 20        |
| <b>Victor Waddilove, H. T.</b>            | <b>7</b>  |
| Victory, Tree H. T.                       | 26        |
| Ville de Paris, H. T.                     | 4         |
| <b>W. F. Wallace, H. T.</b>               | <b>20</b> |
| White Maman Cochet, Tea.                  | 24        |
| Whicuraiana, Ramb.                        | 29        |
| Wilhelm Kordes, H. T.                     | 11        |
| William F. Dreer, H. T.                   | 20        |
| William R. Smith, Tea.                    | 24        |
| Willowmere, H. T.                         | 20        |
| Winnie Davis, Tea.                        | 24        |
| <b>Xanthina, Species.</b>                 | <b>25</b> |

# DREER'S SPECIALLY PREPARED ROSES FOR THE GARDEN

While our old customers are familiar with the high grade of Roses which we send out, we wish to direct the attention of those who have never planted our stock, to the manner in which these plants are prepared. All our Roses are field-grown and in fall are carefully dug, planted in pots and stored in cold greenhouses or cold frames, where artificial heat is used only to exclude the most severe frost. Under this treatment the plants develop in a natural way, and are much superior to stock which has been forced in a high temperature into an unnatural and weakened growth.

Our Roses are all strong two-year-old American-grown, budded or grafted, and while some planters prefer stock grown on their own roots on account of the possibility of budded plants developing wild shoots, this will rarely occur if the deep planting as directed in our cultural notes is followed. Much can be said in favor of budded plants, they being more vigorous, producing finer blooms, coming into bearing sooner, and are as permanent and hardy as those on their own roots, while many of the very finest varieties will not succeed at all when grown on their own roots, and preference is given to budded plants by all who have had experience with the different classes.

## Three "Ideal" New Hybrid-Tea Roses

Illustrated in colors on the plate opposite.

**Dame Edith Helen** (Alex. Dickson & Sons, 1926). Awarded Gold Medals by the National Rose Society of England, 1926, as well as at the New York and Philadelphia Flower Shows in the Spring of 1927; it was also awarded the Clay Cup in England in 1926 for the best sweet-scented Rose shown that year as well as a Certificate of Merit by the Royal Horticultural Society of England; it is not often that so many honors come to a new Rose. We question if any Hybrid-Tea Rose yet introduced promises to be such a valuable addition to our garden Roses as this wonderful new pink variety. The plant possesses a strong, vigorous constitution, the flowers are produced singly on well foliated strong canes throughout the season, these are of immense size, composed of very substantial broad petals which curl back prettily forming a wonderful long pointed bud which develops into a full double flower, which is absolutely perfect in every stage of development. The color is a brilliant, yet soft Rose du Barri pink and is delightfully and strongly sweet scented. \$2.00 each.

We will furnish one strong two-year-old plant each of the 3 Ideal Roses for \$5.00, or we will include the 3 Model Roses described and shown in colors on page 8, 6 in all, for \$12.00

**Lady Margaret Stewart** (1927). Another marvellous introduction of Alexander Dickson & Sons awarded the Gold Medal of the National Rose Society of England at the 1926 Spring Show. A Rose of unique and distinct color, the flowers in the young stage are a deep sunflower yellow heavily veined and splashed with orange-scarlet with the reverse of the petals deeply suffused with carmine, as the flowers develop these colors intermingle forming a most beautiful cadmium orange effect. The bud is long and pointed, opening to a full double flower, of most pleasing decorative form of delightfully sweet scent. \$2.00 each.

**Mrs. Lovell Swisher** (Howard & Smith, 1926). An American raised Rose which has come to stay. It is a remarkably vigorous grower, freely producing perfectly formed long shapely buds with nicely reflexing petals that develop into good double flowers. The color of the buds is a deep coppery salmon at base merging to salmon-pink at the tips. The developed flowers are also salmon-pink deepening toward the centre. Delightfully tea scented. \$2.00 each.

## French Hybrid-Tea Roses

Novelties and Recent Introductions of J. Pernet-Ducher.

We are indebted to the veteran French grower, Mr. Pernet-Ducher, for many of our finest garden Roses, among these being the popular varieties, Souvenir de Claudius Pernet, Souvenir de Georges Pernet, Mme. Edouard Herriot, better known as the Daily Mail Rose; we must not overlook the old variety, Caroline Testout, which he sent out in 1890, thirty-eight years ago, it is still a very popular variety, which is included in every collection; it was this variety which made Portland, Oregon, famous as the Rose City. We would particularly call attention to the latest of Mr. Pernet's introductions, the new golden yellow variety, Mons. Julien Potin, which promises to eclipse all yellows yet introduced.

**Angele Pernet.** Entirely distinct and novel in color, a vivid orange-yellow shaded fiery deep reddish-apricot, but "tango color," we believe, describes it better. It is a good grower producing a long bud opening to a moderately full, beautiful sweet scented flower. Awarded Gold Medal at the Bagatelle Paris trials in 1924. \$1.50 each.

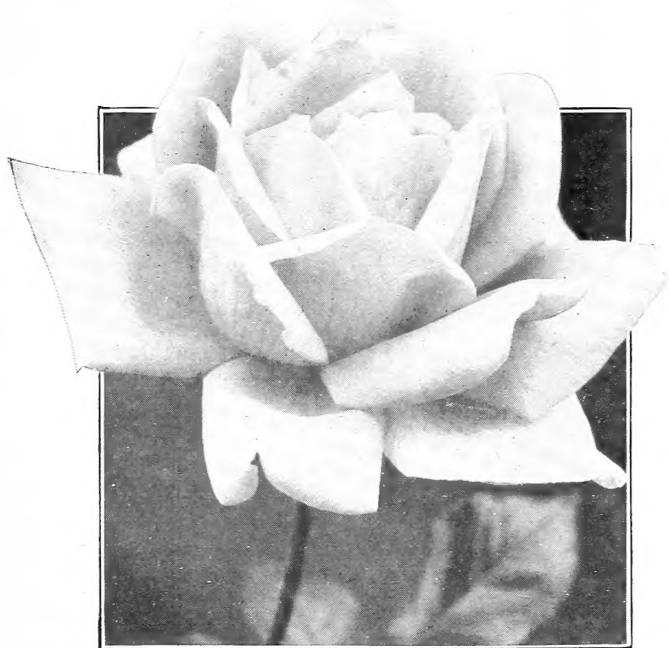
**Cuba.** As a bedding Rose for brilliant mass effect we know of nothing that will equal this French introduction and although the flowers are almost single, they possess a charm and brilliancy in color which is an entirely new tone in Roses, a glorious bright vermilion-scarlet overlying an orange ground, this color combination is so intense that in full sunlight it glistens with an iridescent sparkle. A vigorous grower with dark green foliage which make a splendid foil for the masses of richly colored blooms which it produces from spring to late fall. \$1.50 each.

**Monsieur Julien Potin.** This is Mr. Pernet's latest achievement which will probably become better known as "The Golden Pernet." It is unquestionably the most gorgeous and brilliant yellow Rose yet introduced, a rich golden yellow that grows richer and deeper as the flowers mature. The buds are long and shapely, and develop into large, full flowers of beautiful form, delightfully sweet-scented. Habit of growth upright with ample, attractive, glossy, bronzy-green foliage, very free-flowering.

Delivery of this variety will be made beginning April 1st, in strong two-year-old plants, \$3.00 each.

**Ville de Paris** (*City of Paris*). A very distinct rich buttercup yellow without a trace or any other color, retaining its richness under all weather conditions. In formation it is somewhat similar to Radiance, fairly double and splendid for cutting. Habit upright, and tall, a profuse bloomer. Awarded Gold Medal at the Bagatelle Paris trials in 1925. \$2.00 each.

We will furnish one strong two-year-old plant of the four new French varieties for \$7.00.







**MRS. LOVELL  
SWISHER**

**LADY  
MARGARET  
STEWART**

**DAME  
EDITH  
HELEN**

## NEW IRISH HYBRID-TEA ROSES

The varieties listed below, many of which are being offered exclusively by us in the United States this season, are the latest introductions of Messrs. Samuel McGredy & Sons of Portadown, Ireland, the originators of many of the prominent, popular varieties grown in our gardens at this time.

**Doris Traylor.** Beautiful long buds of a rich brilliant salmon-orange with intense carmine suffusion, large double flowers of splendid form; and delightfully scented. \$1.50 each.

**Irish Charity.** Fair-sized flowers with fine buds of a most intense fiery scarlet with golden sheen opening to moderately double blooms of an attractive rosy-scarlet. \$1.50 each.

**Irish Charm.** This is a gem of exquisite form and absolutely distinct from any variety yet introduced. The buds and flowers are of medium size, the base of the petals a rich golden-apricot passing to a delicate blush-pink as the flowers develop. \$1.50 each.

**Irish Courage.** A splendid addition to the list of bi-colored Roses, the color being a soft shrimp-pink merging to salmon in the fully expanded petals, the whole overlaying a golden orange ground, this color being very pronounced at the centre of the flower. \$1.50 each.

**Irish Hope.** A splendid and distinct red with well-formed buds composed of heavy, broad petals opening to moderately full, very fragrant flowers. The color is a rich rosy-crimson with maroon shadings. It is of splendid, vigorous growth. \$1.50 each.

**Irish Morn.** Magnificent long-pointed buds with heavy shell-like petals, color imperial pink deepening to a coral centre. Very free-flowering and sweetly scented. \$1.50 each.

**Irish Sweetness.** A delightfully fragrant variety and splendid addition to the none-too-long list of good red bedding Roses. Color, an exquisite shade of crimson-lake suffused with scarlet; and very free-flowering. \$1.50 each.

**Lady Florence Stronge.** An entirely new, distinct and novel color; a reddish prawn to violet old rose shading to yellow at the base and pink towards the edge, the inner surface of the petals heavily veined and flushed scarlet, the flowers are large, full with high centres and fragrant. \$1.50 each.

**Lord Charlemont.** This beautiful variety is still very scarce. It is the most gorgeous and brilliant dark red Rose we have with flowers of the most intense clear crimson-scarlet, deepening to carmine-crimson with almost black shadings with perfectly shaped long pointed buds and large, full double, sweetly scented flowers. \$1.50 each.



NEW HYBRID-TEA ROSE, IRISH CHARM

**Lord Lambourne.** Deep buttercup-yellow, each individual petal being heavily margined carmine-scarlet, the buds are long opening to large semi-double flowers, with strong fruity odor. \$1.50 each.

**Mabel Lynas.** A distinct novelty offered for the first time this season, awarded the Gold Medal of the National Rose Society of England. An entirely new break in Roses; while of the Pernetiana type, it possesses the habit and freedom of flowering of the Hybrid Teas and equals the Hybrid Perpetuals in hardiness. In color a brilliant dark crimson with a golden base, the flowers are large, full double, of splendid form, with petals of heavy texture, and of outstanding fragrance. \$2.50 each.

**Mrs. C. W. Edwards.** Rich rosy-scarlet overlaying an orange ground, the base of the petals prettily zoned citron-yellow which runs in faint veinings into the higher colors; a novel color combination. Large, full, fragrant flowers. \$1.50 each.



NEW HYBRID-TEA ROSE, DORIS TRAYLOR

## NEW IRISH HYBRID-TEA ROSES—Continued

The varieties listed below, many of which are being offered exclusively by us in the United States this season, are the latest introductions of Messrs. Samuel McGredy & Sons of Portadown, Ireland, the originators of many of the prominent, popular varieties grown in our gardens at this time.

**Marion Cran.** Messrs. McGredy say of this novelty which is now offered for the first time, "The color combination is the most wonderful we have yet seen in any Rose. In the young stage, before the flowers expand the color is deep buttercup-yellow, margined and flushed cerise and rosy scarlet. As the flower opens, the outside of the petals retain their color, while the inner side opens a brilliant geranium scarlet, flushed and veined orange and yellow; as the flowers age, the color changes to a deep cerise or bright rosy scarlet, flushed buttercup-yellow. The whole flower glows, and has a wonderful sheen and when fully open, the color combination is delightful. The habit is bushy, free, and upright, making a magnificent bush; one of the freest and most perpetual flowering garden and bedding Roses. Awarded Certificate of Merit by the National Rose Society of England." \$3.00 each.

**Mrs. R. B. Moloney.** Pure brilliant crimson-carmine without any variation, wonderfully brilliant and glowing. The flowers are large, of perfect form, with reflexed petals of fine substance and sweet scented. \$2.00 each.

**Mrs. W. E. Nickerson.** An extremely vigorous growing very free-flowering Rose of the duatone Pernetiana type. The splendidly-formed buds are of an entrancing new color, the exterior of the petals heavily veined with rose d'or and shaded orange-cadmium, the interior a deep chrome-yellow on the lower half vein out and pass to a warm rich rosy-salmon. Valuable for interior decoration, particularly so as the intensity of coloring is especially effective under artificial light. \$2.00 each.

**Norman Lambert.** We have received many very favorable comments from Rose friends who planted this variety during the past season on account of its unusual coloring, and free habit of growth and profuse flowering. A distinct color combination, that is novel. The outside of the petals is a deep chrome yellow with a marginal zone effect of brilliant orange-scarlet merging to an irregular zone of burnt orange, the inside salmon-orange, suffused bronze, shading to yellow at the base. \$1.50 each.



NEW HYBRID-TEA ROSE NORMAN LAMBERT

**Patience.** Another Gold Medal Rose of marvelous beauty offered for the first time this season. The color in the young stage is a scarlet carmine lake. As the flower opens, the color is a deep orange at base, shading to orange scarlet, scarlet and carmine lake, these colors are shaded and mingled in a manner impossible to describe. The flowers are large, full and of perfect form, one of the delightful sorts in which every bloom comes perfect, they last for many days when cut and are delightfully fragrant. A variety that we cheerfully recommend as one of the best garden and cutting varieties. \$2.50 each

**Sir David Davis.** As this variety has shown up in the fields during the past two seasons, we do not hesitate to select it as one of the best red bedding Roses. Color, an unfading deep glowing crimson of an even shade throughout running to light yellow at the base of petals. The flowers are of good size, pointed and of good form with large, heavy petals and strongly sweet scented. \$1.50 each.

**Victor Waddilove.** Buds of splendid form, long and pointed, opening to moderately full flowers, sweetly scented. Color, imperial pink flushed crimson and orange; the coloring is intensified by the golden base of the petals, which gives the flowers a golden suffusion which is difficult to convey. Growth vigorous and very free-flowering. \$1.50 each.



NEW HYBRID-TEA ROSE PATIENCE

We will supply one strong two-year-old plant of each of the 19 varieties of this splendid novelty collection offered and described on pages 6 and 7 amounting at single rates to \$33.00, for \$27.50.

## Three New "Model" Roses

Illustrated in colors on plate opposite.

**Mrs. A. R. Barraclough** (McGredy & Son, 1927). Unquestionably one of the finest Roses ever sent out and winner of a Gold Medal of the National Rose Society of England. Pink sounds uninteresting in a new Rose, there being so many of this shade, but in this new variety we have a most distinct and valuable addition of a bright but soft sparkling carmine-pink of an even tone passing to yellow at the base of the petals. The color does not fade as the flower ages, but appears to become brighter. The bud is long and perfect and develops into a full double flower of great size, model form and substance; very fragrant. \$2.50 each.

**Margaret McGredy** (McGredy & Son, 1928). Now offered for the first time. This is the third season that we have had this wonderful Rose under observation and we consider it one of McGredy's most brilliantly colored masterpieces, large, beautifully shaped full double flowers, entirely distinct from all others in its rich coloring, which is a brilliant shade of Turkish or Oriental red, passing as the flowers age to a beautiful carmine-rose, these are borne on long stiff stems and hold their form and beauty for a long time. \$3.00 each.

**Frank Reader** (Verschuren & Sons, 1927). A large massive flower with high pointed centre with nicely reflexing petals of great substance, the long buds in first developing are a light lemon-yellow, while the flowers in their half-expanded form reveal a heart of golden apricot; it has a delicious rose apple scent. A vigorous grower and free bloomer. \$2.00 each.

We will furnish one strong two-year-old plant each of the three Model Roses for \$7.00 or we will supply the six sorts illustrated in colors and described above and on page 4 for \$12.00.



NEW HYBRID-TEA ROSE MRS. ERSKINE PEMBROKE THOM

## Five Choice California Hybrid-Tea Roses

Introductions of Howard & Smith, the raisers of such popular varieties as Los Angeles, William F. Dreer, Miss Lolita Armour, Eldorado, Mrs. S. K. Rindge, etc.

**Mary Pickford.** A novel Rose of merit. In habit of growth, it is strong, vigorous. Color, an exquisite shade of yellow, stained on the reverse of the outer petals with salmon, blush and orange yellow. \$1.50 each.

**Mrs. Erskine Pembroke Thom.** Considered by many as the best yellow garden variety yet introduced. In the writer's garden during the past season a bed of a dozen plants showed a clean healthy vigorous growth almost equal in strength to that best of all bedding Roses, Radiance, with ample dark bronzy green disease-resisting foliage. The medium sized buds are long and shapely and develop into fair-sized flowers that are full double of nice form, of a rich lemon-yellow and sweetly scented. Very free-flowering. \$2.00 each.

**Mrs. William C. Egan.** Introduced in 1922 and named in honor after the life partner of the veteran and one of the best posted amateur horticulturists in the country, Mr. William C. Egan; it has gained great popularity; it has for several years, been included in the Dreer Dozen of Twelve Best Hybrid-Tea Roses. In color it is a beautiful two-tone pink. For full description, see page 12. \$1.00 each.

**Mrs. Lovell Swisher.** First offered in 1926; in general habit and form similar to Mrs. William C. Egan, but distinct in color being a deep coppery salmon at base merging to salmon pink at the tips and of still greater vigor in growth. For full description and colored illustration, see page 4. \$2.00 each.

**Miss Theresa Morley.** Now offered for the first time. A very strong, vigorous, tall upright grower with large rich dark green, disease-proof foliage and large buds developing into good full flowers of a brilliant carmine cerise. A splendid Rose for the garden, particularly good in late summer and autumn. \$2.00 each.

We will furnish one strong two-year-old plant each of the 5 Californians for \$7.00.



HYBRID-TEA ROSE  
MRS. WILLIAM C. EGAN



FRANK  
READER

MRS. A. R.  
BARRACLOUGH

MARGARET  
MC GREY



NEW HYBRID-TEA ROSE, JOHN RUSSELL

## New Hybrid-Tea Roses Introductions from Various Specialists

**Bedford Crimson** (Laxton Bros., 1926). This grand Rose was awarded the Clay Challenge Cup by the Royal Horticultural Society of England for the best new Rose with the best Old Rose Scent. Aside from its delightful odor it is unquestionably the most beautiful high colored full double Rose yet introduced, a brilliant crimson-scarlet. It is of beautiful form both in the half developed, as well as in the fully expanded bloom, produced profusely on good stiff stems. \$2.00 each.

**Doris Dickson** (Sandy Dickson, 1926). Exquisitely formed medium-sized flowers, the base color of which is orange cream, but so heavily veined and pencilled with deep brilliant cherry that it is impossible to adequately describe the unique coloring. Growth vigorous, very free flowering, and extremely fragrant. A variety that is sure to become a favorite. \$2.50 each.

**Duchess of Athol** (Dobbie & Co., 1928). The coloring of this new variety is uncommon and delightful, an old golden orange flushed with peach pink, particularly attractive in the bud and open state, growth vigorous, a continuous profuse bloomer. Awarded Certificate of Merit by the National Rose Society of England. \$2.50 each.

**Duchess of York** (Sandy Dickson, 1925). Flowers large, full and fine form. Color in the young stage deep golden yellow, with deep tangerine orange centre, the color spreading from the centre and suffusing the whole flower. A Rose of exceptional merit for bedding and garden decoration; its freedom of bloom is extraordinary, exceptionally long lasting as a cut flower. \$2.00 each.

**Frank Reader** (Verschuren & Sons, 1927). Among light colored Roses, this variety is of outstanding merit. For full description and colored illustration, see page 8. \$2.00 each.

**J. Otto Thilow** (Verschuren & Sons, 1927). This variety was named in memory of our late Mr. Thilow. It is a rich glowing rose-pink of exceptional merit with long pointed buds of perfect formation, as the flowers expand, the petals reflex forming a beautiful large double high centred flower. It is a very strong grower with clean healthy foliage and a continuous profuse bloomer, a grand garden Rose in every respect. \$1.50 each.

**John Russell** (Dobbie & Co., 1924). One of the handsomest red Roses, beautiful both in bud and in the fully expanded flower. We have always been pleased with this Rose, and everyone admires it for its splendid form and rich color, a very large double flower of a brilliant deep velvety crimson, the growth is exceptionally strong, vigorous and hardy. Awarded a Gold Medal by the Royal Horticultural Society of England. \$1.50 each.

**J. C. M. Mensing** (Eveleens & Sons, 1924). Not a large, but a very dainty flower both buds and flowers of ideal form, of a lovely soft shade of rose-pink, splendid free-flowering habit, and deliciously sweet-scented. \$1.50 each.

**Lady Dixon Hartland** (Cant & Sons, 1923). Long pointed shapely buds and large flowers, deep salmon-pink at centre shading to lighter pink at the edges, very free and sweetly scented. \$1.50 each.

**Lady Mary Elizabeth** (Alex. Dickson & Sons, 1927). A variety of outstanding merit that will be appreciated in the garden and for cutting. The plant is of strong vigorous, upright, branching habit with good healthy foliage and very prolific flowering. The delightfully fragrant flowers are carried on long stiff stems, the buds are very shapely, long pointed, and open to blooms of moderate fullness, with broad deep substantial petals, in color a brilliant deep carmine-pink. \$2.50 each.



NEW HYBRID-TEA ROSE, BEDFORD CRIMSON

## New Hybrid-Tea Roses

### Introductions from Various Specialists—Continued

**Lady Roundway** (Cant & Sons, 1923). A striking and distinct shade of rich golden-orange with deep copper-chrome suffusion. Sweetly scented, free flowering, strong, vigorous dwarf habit. A Gold Medal variety that was very appropriately described by one of our Rose friends as a double flowering Angele Pernet. \$2.00 each.

**Leslie Pidgeon** (Hugh Dickson, 1922). A delightfully informal semi-double decorative flower, orange buff heavily flushed and suffused with terra cotta shading lighter in hot weather. \$1.50 each.

**Mrs. Beatty** (Cant & Sons, 1926). An exquisite self-colored light lemon yellow with the delightful perfume of the old favorite Marechal Niel. Habit of growth good with disease-immune foliage, always in flower with large, long, oval, pointed buds. A Rose that is destined to become a popular favorite. Awarded a Gold Medal by the National Rose Society, and Certificate of Merit of the Royal Horticultural Society of England. \$2.00 each.

**Mrs. Henry Bowles** (Chaplin, 1921). A Rose of striking appearance that everybody admires. Splendidly shaped long ovoid buds developing into very perfect high-centred full double flowers of exquisite beauty, in color it is an impressive, effective, luminous deep salmon pink. A vigorous grower that is always in bloom; one of the best. \$1.50 each.

**Mrs. Tom Smith** (T. Smith & Sons, 1924). A splendid Gold Medal variety of thorough distinctness and merit. The expanding buds and the developed flowers are models in formation, there are none more perfect. Color a distinct glowing cerise, very fragrant; a strong vigorous grower and very free flowering. \$2.00 each.

**Oliver Mee** (Sandy Dickson, 1927). A Rose of great charm and beauty. The buds are long and pointed, of exquisite shape, and open to large, full high-centred flowers of great distinction. The color in the young state is deep salmon with a heavy flush of clear fawn, changing with age to deep salmon pink. One of the most beautiful Roses of recent years; sweetly scented. \$2.50 each.

**Pink Pearl** (Leenders & Co., 1924). A dainty variety destined to become a universal favorite if it had nothing to recommend it but its delicious fragrance. In color it is a brilliant rich cerise pink the base of the petals touched with gold that lights up the flower wonderfully particularly in the half expanded bloom. The flowers are full double, of perfect form. \$1.50 each.



NEW HYBRID-TEA ROSE,  
MRS. HENRY BOWLES



HYBRID-TEA ROSE, REV. F. PAGE ROBERTS

**Rev. F. Page Roberts** (Cant & Sons, 1921). A Rose of remarkable beauty both in form and color. The long pointed buds are of a coppery-red stained red on the outside and open to good full double fragrant flowers of a golden-yellow particularly high colored in late summer and fall. The plant is of vigorous branching habit with beautiful foliage. A most distinct variety that has deservedly gained great popularity. \$2.00 each.

**Roselandia** (W. Stevens, 1924). A sport from the popular variety Golden Ophelia, over which it is an improvement not only in color but in its remarkable free-flowering habit. It is a golden-orange suffused with a lustrous glow of apricot in the heart and at the base of the petals, frequently tinted red on the reverse of the outer petals; the buds are long pointed, of superb build and substance, and very sweet scented. \$1.50 each.

**Royal Scot.** A variety of gorgeous coloring with large ovoid buds of the type of Lord Lamborne, but much brighter in coloring, a rich golden yellow with crimson edges, the open flowers are of medium size, semi-double, light yellow with crimson edged petals and are borne several together on long stems, growth vigorous, very profuse flowering; of moderate fragrance. \$2.50 each.

**Wilhelm Kordes** (Kordes & Sons, 1922). Long pointed buds opening to full double flowers, a rich capucine red overlaying a golden ground, wonderfully prolific. \$2.50 each.

**SPECIAL OFFER.** We will supply one strong two-year-old plant each of the 21 new varieties, offered on page 10 and above amounting at single rates to \$41.00, for \$35.00.

## THE "DREER DOZEN"

### HARDY EVERBLOOMING HYBRID-TEA ROSES

For many years it has been customary for us to offer under this heading only the very best and most popular, well-tried varieties of Hybrid-Tea Roses, with the majority of which every lover of the Rose is familiar.

We recommend this collection for general planting to the amateur who wishes a limited number of varieties, and who is desirous of a supply of extra choice flowers to cut throughout the season. Those who desire a more extensive collection can select with perfect confidence any variety in our collection of Hybrid-Tea Roses. There is not one individual sort which we cannot endorse as possessing superior merit, all having been thoroughly tested.

**Duchess of Wellington.** The most popular yellow garden Rose. Intense saffron-yellow stained with deep crimson, changing to a deep coppery saffron-yellow as the flowers develop. The flowers are fairly full, with large petals, great substance, delightfully fragrant and very free-flowering.

**Hadley.** One of the best high colored varieties, an intense, rich, dazzling, crimson-scarlet shading to velvety crimson, deliciously fragrant. The plant is of vigorous growth, and is particularly fine in the Autumn.

**Imperial Potentate.** Introduced only five years ago, this beautiful variety has already found a place among the most popular garden sorts. Its splendidly shaped buds develop into large, sweet scented double flowers of crisp, glistening rose-pink with silvery suffusion at the base of the petals. Of strong, vigorous erect habit of growth, and very free flowering.

**Los Angeles.** This is, by all odds, one of the finest Roses ever introduced. The growth is very vigorous, and produces a continuous succession of long-stemmed flowers of a luminous flame-pink, toned with coral and shaded with translucent gold at the base of the petals. In richness of fragrance it equals in intensity the finest Marechal Neil. The buds are long and pointed, and expand into a flower of mammoth proportions, while the beauty of form and ever-increasing wealth of color is maintained from the incipient bud until the last petal drops.

**Mme. Jules Bouche.** While not a pure white, it being at times slightly tinted with blush at the centre, it is to all intents white and without question the best white everblooming bedding Rose yet introduced. The flowers are large, quite double and of splendid form both in the bud as well as in the fully expanded flower; it is fragrant, a vigorous grower and very free flowering.

**Mrs. William C. Egan.** An extremely vigorous strong healthy grower, with long, pointed buds of absolutely perfect form, that develop into flowers of good shape. In color it is a two-tone pink, the reverse of the petals a soft light pink, the interior deep flesh color with a golden line at the base of the petals; the flowers are carried on long stiff stems, and last in good condition for an unusually long time, either cut or on the plant; an exceptionally free and continuous bloomer.

**Mme. Edouard Herriot,** the Daily Mail Rose. In color its buds are coral-red, shaded with yellow at the base, the open flowers of medium size, semi-double, are of a superb coral-red, shaded with yellow and bright rosy-scarlet passing to shrimp-red. A wonderful color combination.

**Padre.** One of the finest bedding Roses of recent introduction which has quickly gained a prominent position as such. Its color is a brilliant coppery scarlet flushed with yellow at the base, a brilliant rich color combination. The beautiful long buds are borne on very long stiff stems and are splendid for cutting and while the fully developed flowers are only semi-double they are of unusual formation and attractive in all stages. One of the freest flowering Hybrid-Tea varieties.

**Radiance.** An ideal bedding Rose of American origin that continues to produce its large flowers throughout the most unfavorable hot summer weather when frequently many other varieties fail; in color a brilliant carmine-pink, with salmon-pink

and yellow shadings at the base of the petals; truly a Rose for every garden.

**Red Radiance.** A counterpart of Radiance from which it is a "sport," possessing all the good traits of that valuable variety but differing in color which is a bright cerise-red.

**Souvenir de Claudius Pernet.** A most vigorous grower of erect branching habit, beautiful, brilliant green foliage, long pointed buds of exquisite shape, carried on long, stiff stems. Very large, full flowers with elongated deep petals, a beautifully formed bloom. Color, striking sunflower-yellow, deeper in the centre, without any color blending, and which is retained without fading even in the warmest weather.

**Souvenir de Georges Pernet.** This stands at the head of the list of the many valuable garden Roses that have been produced by Mr. Pernet-Ducher. It is a strong, vigorous grower and produces its large flowers which are beautiful in both bud and fully developed bloom, which are of an intense oriental red, shading to cochineal carmine at the margin of the petals, the whole being suffused with a golden sheen.



HYBRID-TEA ROSE, LOS ANGELES

Price. Any of the above, in strong two-year-old plants, \$1.00 each; \$11.00 per doz.; \$90.00 per 100.

One each of the "Dreer Dozen," a fine collection, for \$11.00.





*New American*  
**HYBRID-TEA ROSE**  
*"Los Angeles"*

## GENERAL LIST OF DREER'S SELECT HYBRID-TEA ROSES

Under this heading we offer on this and the five pages following the **World's best Hybrid-Tea varieties**, all of them sorts which we have had the pleasure of thoroughly testing, and which we fully endorse and recommend to the large and small planter, which together with the Dreer Dozen and the newer sorts offered on pages 4 to 12, forms not the longest list of varieties, but what is undoubtedly the **finest collection of Hybrid-Tea Roses** ever offered to the Rose loving American public.



HYBRID-TEA ROSE IMPERIAL POTENTATE

**Admiral Ward.** A splendid crimson-red, shaded fiery red; large globular flowers.

**America.** Glowing rose-pink with long pointed buds which open up to most artistically formed double flowers.

**Amelie de Bethune.** Color very much like Mme. Edouard Herriot—coral red shade with yellow at the base—but a much larger, more double flower.

**Annie Laurie.** Large double flowers, flesh-pink shading deeper at edges with golden-yellow centre.

**Antoine Rivoire.** An ideal bedding Rose of large size, exquisite fragrance, form and coloring, soft peach flesh with deeper shadings; the base of the petals yellow.

**Arthur R. Goodwin.** A beautiful rich-colored coppery-orange; as the flower matures it opens to a soft salmon pink; a good, full flower, sweetly scented, free and distinct. \$1.50 each.

**Aspirant Marcel Rouyer.** Long shapely bud that develops into a good sized, substantial double flower with heavy shell-like petals. Color, deep apricot, tinted red at centre reverse of petals shaded salmon-flesh with deep yellow veinings at the base.

**Belle Cuivree.** Beautiful semi-double cupped flowers of a distinct shade of reddish copper passing to a deep salmony rose as they mature, free and vigorous.

**Betty.** Produces blooms of marvelous beauty, particularly so in the autumn. Color glowing coppery-rose, suffused with a golden sheen.

**Betty Uprichard.** A pretty combination of colors, inner face of petals delicate salmon-pink to carmine, outside glowing carmine with coppery sheen and orange suffusion; well-formed medium sized flowers of good substance and sweet scented.

**Price.** Any of the above, except where noted in strong two-year old plants, \$1.00 each; \$11.00 per doz; \$90.00 per 100.

**Caroline Testout.** One of the most popular and valuable bedding varieties; large, full globular flowers of bright satiny rose, with brighter centre, very free and fragrant. The Rose that made Portland, Oregon, famous as the Rose City.

**Chateau de Clos Vougeot.** Beautiful rich flowers, brilliant scarlet shaded fiery red changing to dark velvety crimson as the blooms expand, very double, intensely fragrant.

**Cheerful.** Very distinct and interesting in formation, not unlike a semi-double Peony, flowers large, bright, glistening pink illuminated with orange and yellow, passing to soft pink as it ages.

**Cleveland.** A large full flower of great beauty, color old rose and copper, slightly fragrant.

**Columbia.** Of strong, vigorous habit and exceptionally free blooming. The flowers are perfect in form. Color a most pleasing shade of rose-pink and delightfully fragrant.

**Constance.** A free-flowering variety, producing beautiful long orange-yellow buds, more or less streaked with crimson; as they develop they open to a full globular flower of golden-yellow.

**Constance Casson.** Large light pink, marked and shaded with apricot, gold and copper. Very double, of good substance, free and fragrant. \$1.50 each.

**Comtesse de Cassagne.** Flowers of varying color, rich coppery pink shaded clear rose, occasionally comes quite yellow, long pointed buds developing into fine large flowers. Growth vigorous, very sweet scented.

**Crusader.** Large massive and full double flowers on stiff stems, fine for cutting, color a rich crimson, particularly good in late summer and fall.

**Diadem.** A large double, sweetly scented, coppery-orange, heavily overlaid with salmon and red tints, very distinct.

**Edgar M. Burnett.** Very large, full flowers of splendid form, with large flesh-colored petals tinted rose, one of the sweetest scented Roses in existence.

**Edel.** An enormous bold, stately, well built flower of great depth, quality and finish. Color, white with the faintest ivory shading towards the base.



MME. EDOUARD HERRIOT OR DAILY MAIL ROSE

## Select Hybrid-Tea Roses

**Elsie Beckwith.** Beautifully shaped buds opening to high centred full double flowers of a rich deep glowing rose-pink and sweetly scented.

**Emile Charles.** A French introduction of rich coloring, the buds being of a fiery red shaded and suffused with golden yellow, these develop to medium sized flowers of superb coral-red shading to rosy strawberry-red on the outer petals. \$1.50 each.

**Emma Wright.** Not a large flower, but a most liberal bloomer, of semi-double form, of a glistening orange.

**E. P. H. Kingma.** A "sport" from the popular Daily Mail Rose Mme. Edouard Herriot, in color a wonderful rich glowing deep orange shaded apricot, the flowers are semi-double, beautiful in bud form, it flowers profusely and continuously.

**Eldorado (Land of Gold).** Of free flowering habit and fragrance, in color it is of the golden yellow that is peculiar to the climbing Rose Marechal Neil.

**Elegante.** Long sulphur yellow buds developing into large full creamy-yellow flowers, very free flowering. \$1.50 each

**Ethel James.** One of the most artistic of the single-flowering hybrid-teas. Very large, sweetly scented, flowers opening out in salver form, of a deep carmine flushed with orange.

**Etienne Rebeillard.** A delightful shade of flesh-pink with golden suffusion, flowers of globular graceful form. \$1.50 each.

**Etoile de Feu.** Very large, full double globular flower of a salmon-pink color shaded with flame.

**Etoile de France.** Vivid crimson with darker shading with full rounded centre, free flowering on long stems, long lasting and very sweet.

**Etoile de Hollande.** One of the most reliable red bedding Roses. A strong clean vigorous grower that produces its large, magnificent flowers throughout the season, these are moderately double and particularly attractive in the half-open state, in color a brilliant crimson red.

**Felicity.** A beautiful shade of mallow-pink, shading to cerise at border, cupped flowers.

**Feu Joseph Looymans.** Long and pointed buds, large full flowers, yellow with vivid apricot at the centre.

**Florence L. Izzard.** Deep pure buttercup yellow, long pointed beautiful buds, delightfully scented. \$1.50 each.

**Francis Scott Key.** Large double flowers of rich crimson-red, a strong sturdy grower and free bloomer, particularly good in fall.



HYBRID-TEA ROSE  
MME. JULES BOUCHE

**Florence Pemberton.** An excellent bedding Rose. In color it is a creamy white suffused with pink, a fine bold flower with high pointed centre and great depth of petal.

**Frances Gaunt.** A beautiful shade of apricot, pretty cup-shaped flowers, freely produced.

**Frank Dunlop.** A free flowering brilliant deep rose-pink, very double and highly scented.

**General MacArthur.** One of the best all-around bedding Roses, its flowers are of good form, of a warm, rich crimson scarlet.

**George C. Waud.** A beautiful Rose with an entirely distinct color, a glowing vermilion with orange-red suffusion, good sized flowers of perfect double form, sweet scented and very free.

**Golden Emblem.** A most beautiful clear yellow, occasionally flaked with crimson on the outer petals, wonderfully well shaped buds and flowers on long stems, with rich glossy green foliage.

**Golden Ophelia.** Nicely shaped buds with deep golden-apricot centre shading lighter toward the edges.

**Gorgeous.** Flowers large, full and exquisitely formed, of an amber yellow, veined with reddish-copper, of strong, vigorous habit.

**Grange Colomb.** Color soft ivory-white, with salmon and fawn centre; as the flowers mature, they gradually pass to pure white.

**H. V. Machin.** A gorgeous flower of large size; in color an intensely black-grained scarlet-crimson. A vigorous grower!

**Hoosier Beauty.** Intense rich, dazzling crimson-scarlet, good sized full flowers deliciously scented.

**Independence Day.** An entirely distinct and novel color that at once arrests attention, a rich orange-apricot suffused with sunflower-yellow. Very freely produced and delightfully fragrant.

**Irish Elegance.** A dainty single-flowering Rose with bronzy pink buds expanding with apricot and yellow shades, a strong grower.

**Irish Fireflame.** A glorious single-flowering variety, bearing its flowers in clusters of five or more; splendid for cutting in sprays in bud form. These buds are wonderfully rich in coloring, a rich deep orange, splashed with crimson, opening to a large single flower of a satiny old-gold, shaded with ochre.

**Isobel.** A lovely single flowered or five petalled variety that is greatly admired. The flowers are  $4\frac{1}{2}$  inches in diameter of a flushed carmine and orange passing to pink, fragrant and free.

**Joseph Hill.** A perfect gem and remarkably free-flowering; in color a lovely shade of salmon-pink.

**Jonkheer J. L. Mock.** One of the best bedding varieties. The flowers, produced with the greatest freedom are of large size of a deep imperial pink, the outside of the petals silvery-rose.



HYBRID-TEA ROSE, MME. POINCARÉ

**Price.** Any of the above, except where noted in strong two-year old plants, \$1.00 each; \$11.00 per doz.; \$90.00 per 100.

## Select Hybrid-Tea Roses



HYBRID-TEA ROSE  
MME. LEON PAIN

**Josephine Thomas.** The eminent Rosarian, Captain George C. Thomas, selected this variety from Howard & Smith's seedlings to name after his daughter. It is of strong, vigorous habit and produces its flowers on fine long stems. These are of a light orange salmon at the centre, the outer petals gradually shading to a cream-flesh, does not fade or discolor and always carries a high pointed centre of smaller petals. Splendid garden Rose.

**Kaiserin Augusta Victoria.** In color a soft pearly-white, tinted with just enough lemon in the centre to relieve the white, remarkably fragrant.

**Killarney.** One of the most popular pink garden Roses. The blooms are large, the petals of great substance.

**Killarney Brilliant.** A "sport" from Killarney far more intense in coloring, a rich glowing shade of rosy-carmine, also more double than its parent.

**Killarney Double White.** A pure white but more double form of Killarney, a beautiful Rose.

**Killarney Queen.** Also a sport of Killarney with larger, more double flowers, which are absolutely perfect in all stages of development, color a sparkling cerise-pink.

**K. of K. (Kitchener of Khartoum).** An exceptionally free flowering variety for garden effect, the brilliant scarlet buds open to brilliant semi-double fragrant flowers, very free.

**Lady Alice Stanley.** A gem that everyone admires; it is absolutely perfect in every way; in color it is a beautiful shade of coral-rose, the inside of the petals shading to flesh-pink.

**Lady Ashtown.** One of the best garden Roses and a fine long lasting cut flower. Flowers large, of a pleasing carmine-pink shading to a golden-yellow base.

**Lady Inchiquin.** A Rose of marvelous beauty and distinction, large, full, perfect shaped flowers, deliciously scented, very free.

**Lady Pirrie.** Deep copper reddish-salmon; inside of petals apricot-yellow, flushed fawn and copper; an ideal fragrant variety admired by everyone. Very free flowering.

**Lady Ursula.** A variety that always grows well and flowers freely. Good shaped buds and full double flowers of a delightful tone of flesh pink merging to a yellow base.

**Laurent Carle.** Produces its large, deliciously scented, brilliant carmine flowers throughout the entire season.

**Louise Catherine Breslau.** Entirely distinct from all other Roses in color; a superb shrimp-pink shaded coppery-orange and chrome yellow, large full flowers.

**Lulu.** A dainty and distinct, nearly single Rose with exceptionally long buds which in outline, remind one of the miniature or Fairy Rose Mme. Cecil Brunner, but much larger in size, while in color it is similar to Mme. Edouard Herriot, orange-red shaded with salmon-pink. Beautiful in bud form.

**Mabel Morse.** A most beautifully shaped long bud which develops into a handsome good-sized flower of the richest clear, bright golden-yellow. It is a strong, vigorous grower, very free-flowering with rich glossy foliage.

**Margaret Dickson Hamill.** A magnificent Rose, its delicate straw-colored deep shell-like petals are flushed with carmine on the back, a fine bedding variety.

**Marquise de Sinety.** A very beautiful color, golden-yellow shaded with bronze-red, deliciously scented.

**Mary, Countess of Ilchester.** A warm crimson-carmine, flowers large, very double, and delightfully scented.

**Miss Cynthia Forde.** A very double perfectly formed bright sparkling pink, of strong vigorous habit and very liberal in producing its very sweet scented flowers.

**Miss Lolita Armour.** The coloring of this variety is a combination of tints difficult to describe. The flowers are of large size, full double, of a deep, coral-red with a golden, coppery-red suffusion, a strong, vigorous grower and very free flowering.

**Mme. Alexandre Dreux.** An attractive dainty Rose, not of large size, but with beautiful long buds of a brilliant golden coppery tangerine orange yellow that is most captivating. A compact, but vigorous grower. \$1.50 each.



HYBRID-TEA ROSE, MRS. AARON WARD

**Price.** Any of the above, except where noted in strong two-year old plants, \$1.00 each; \$11.00 per doz.; \$90.00 per 100.



MRS. WILLIAM  
C. EGAN

SOUVENIR DE  
H. A. VERSCHUREN

PADRE

## Select Hybrid-Tea Roses



HYBRID-TEA ROSE, PRESIDENT CHERIOUX

**Mme. Abel Chatenay.** A beautiful and much admired light pink, shaded salmon and carmine, buds of splendid form, fine for cutting.

**Mme. Butterfly.** Beautiful buds and flowers, light soft pink tinted yellow at base of petals, very free and highly scented.

**Mme. Charles Lutaud.** Chrome-yellow tinted with rosy scarlet on the outer petals, very large, full cupped form.

**Mme. Edmond Rostand.** One of our favorites; a fine large flower of a pleasing soft, delicate flesh shaded with salmon, and reddish orange-yellow centre.

**Mme. Leon Pain.** Entirely distinct in color, a silvery-salmon, with deeper orange-yellow shaded centre, the reverse of the petals being a salmon-pink; very free-flowering.

**Mme. Melanie Soupert.** For delicacy in coloring it would be difficult to surpass this magnificent semi-double large-flowered variety which is especially fine in bud form; in color a charming pale tint of salmon-yellow with pink and carmine suffusion.

**Mme. Poincare.** A most desirable garden variety of healthy vigorous growth and free flowering habit. Its buds are long and shapely, the attractive flowers are of cupped form and full double. Color a pretty salmon-pink deepening to an apricot centre.

**Mme. Ravary.** A charming bedding Rose, deep nankeen-yellow, shading lighter as the flower expands, these are beautiful cup shaped form, very sweet and free.

**Mme. Segond Weber.** A grand Rose in every way. It is a vigorous grower, free-flowering, large, perfectly formed, cup-shaped, fragrant flowers of marvelous beauty. In color it is a soft tone of salmon-pink.

**Mrs. Aaron Ward.** A remarkably floriferous variety of strong, vigorous, but compact growth; the flowers, full double, in color a distinct Indian-yellow, shading lighter towards the edges.

**Mrs. Arthur Robert Waddell.** An attractive variety of distinct color, that everyone likes, a delicate, soft, rosy-salmon, suffused with a golden sheen; a free-flowering garden variety that should be in every collection.

**Mrs. Beckwith.** An erect grower of splendid habit, with glossy, light green foliage, long shapely buds, medium sized, full, gracefully shaped flowers of a buttercup yellow, shading lighter at the edges of the petals.

**Mrs. Charles Bell.** Similar in habit to Radiance with splendid buds and flowers of fine globular form, of a lovely shell-pink color with salmon shadings, sweetly scented.

**Mrs. Charles Lamplough.** A most refined and pleasing soft tone of light lemon, flowers of wonderful size, depth and substance; very sweet scented. A vigorous grower.

**Mrs. Charles Russell.** A beautiful Rose with large, globular, well formed highly perfumed flowers, of a rosy carmine, with rosy scarlet centre; of strong branching habit.

**Mrs. S. K. Rindge.** Of strong free-branching habit of growth long pointed buds, carried erect on stiff stems. Color clear rich chrome-yellow, which, as the flowers mature, become suffused with salmon-pink.

**Mrs. Dunlop Best.** A splendid reddish-apricot, the base of the petals coppery-yellow, a vigorous grower and very free.

**Mrs. Franklin Dennison.** A Rose of surpassing beauty, very large and full, well formed flowers; of porcelain-white veiled primrose-yellow. A strong, vigorous grower, producing its large sweetly scented flowers in the greatest profusion.



HYBRID-TEA ROSE, ROSE MARIE

**Price.** Any of the above, except where noted in strong two-year old plants, \$1.00 each; \$11.00 per doz.; \$90.00 per 100.



HYBRID-TEA ROSE, SOUV. DE GEORGES PERNET



HYBRID-TEA ROSE, MRS. CHARLES LAMPLOUGH



HYBRID-TEA ROSE, MRS. H. S. PRENTISS NICHOLS

**Mrs. Henry Morse.** One of the best pink varieties of recent introduction. Color two contrasting tones of pink with an underlying yellow glow, flowers large, full and very high pointed.

**Mrs. Wakefield Christie-Miller.** As a pink bedding Rose there is none better. The flowers, which are of large size, remain perfect on the bushes for a long time, and are produced very freely; they are of a bright pink color with lighter shadings, the plant is vigorous and free.

**Mrs. F. W. Vanderbilt.** Deep orange-red shaded bronze apricot-red, shape perfect, very fragrant; a strong vigorous grower and particularly free.

**Mrs. H. S. Prentiss Nichols.** One of the strongest growing Hybrid-Tea Roses. Producing its large double, well formed flowers very freely, in color a brilliant deep pink. A very good bedding variety. \$1.50 each.

**Mrs. Redford.** Bright apricot-orange one of the most lovely of this tone of color, an upright grower with holly-like mildew-proof foliage. The flowers are substantially built, perfect in form, very free blooming.

**Mrs. Wemyss Quin.** Deep lemon-chrome, shading lighter as the flower expands, outer petals tinged crimson-orange; very striking.

**Nederland.** A particularly good deep glowing red, splendid buds opening to very large well formed flowers on long stems, fine for cutting.

**Ophelia.** A variety which has made such a record for itself that qualifies it to be classed with the very best, a Rose that is admired by everyone; its flowers are held erect on long stiff stems, are of perfect form, good size, and of a most pleasing delicate tint of salmon-flesh, shaded with rose, very floriferous.

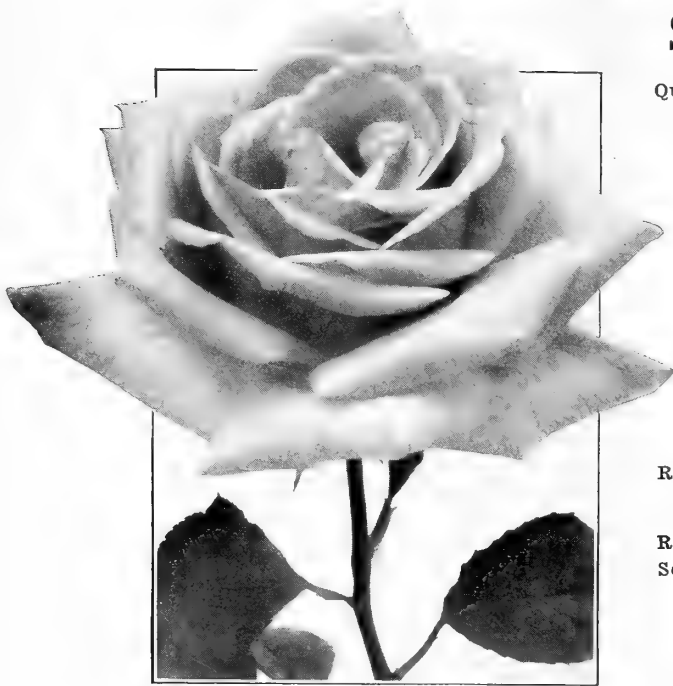
**Pax Labor.** A strong vigorous grower with large full light yellow flowers passing to sulphur-yellow as they develop, particularly good in the autumn.

**Premier.** Brilliant rich deep pink flowers of large size and full form borne singly on long stiff stems, fragrant, particularly good in late summer.

**President Cherioux.** A beautiful Rose, a pretty shade of prawn-red and salmon-pink shaded with yellow, large, full, perfectly shaped, globular flowers and very free blooming.

**Prince de Bulgarie.** Large full double fragrant flowers of capital form which are produced abundantly throughout the season; a good reliable bedder of a silvery flesh color, deepening to the centre with delicate salmon-rose shadings.

**Price.** Any of the above, except where noted, on strong two-year-old plants, \$1.00 each; \$11.00 per doz.; \$90.00 per 100.



HYBRID-TEA ROSE UNA WALLACE

**Souvenir de H. A. Verschuren.** A most desirable two-toned yellow, the edges light buff deepening to apricot yellow at the centre, particularly rich in cool weather. Buds and flowers of capital form, growth vigorous and healthy, very free and sweetly perfumed.

**Souvenir de George Beckwith.** A variety that is meeting with much favor, flowers very large, globular and full double, with petals of good substance. Color shrimp pink, tinted chrome yellow shading deeper at the base of the petals, the various shades blending very harmoniously, moderately fragrant.

**Sunburst.** A very beautiful yellow Rose strongly suffused with orange at the centre, buds and developed flowers of good form, sweetly scented.

**Templar.** Splendid long oval buds and very double globular fragrant crimson flowers which are particularly good early in the season and in the autumn.

**The Queen Alexandra.** A brilliant flower of intense vermilion deeply shaded old gold on reverse of petals, which spring from a pure orange base, one of the most remarkable color combinations seen in Roses. The flowers are quite full and when half blown are bewildering in their beauty, delightfully sweet-scented.

**Una Wallace.** In color quite distinct from any other Rose, a beautiful soft, even toned cherry-rose without shading. In depth, formation, and substance it is faultless, every bloom coming perfect, and quite full. It is one of the freest growers.

**W. E. Wallace.** Deep golden yellow without shading, very large, full and of exquisite form, freely and abundantly produced, a magnificent garden Rose.

**William F. Dreer.** A beautiful Rose of the same parentage as Los Angeles, and which, for delicacy of coloring, is not comparable to any other variety. The flowers, which are similar in shape to Los Angeles, and like that variety, beautiful in all stages are at their best in the half expanded flower. These, in expanding, are of a soft, silvery shell-pink, at certain stages of development, a golden suffusion illuminates the entire flower.

**Willowmere.** This splendid Rose is of a coral-red; suffused with carmine in the bud state, and opens to a large, full, handsome flower of a rich shrimp-pink, shaded yellow in the centre and flushed carmine-pink towards the edges.

**Price.** Any of the Select Hybrid-Tea Roses offered on pages 14 to 20, except where noted in strong two-year-old plants, \$1.00 each; \$11.00 per doz.; \$90.00 per 100.

#### Special Offer of Select Hybrid-Tea Roses

We will supply a strong two-year-old plant each of the 123 sorts offered on pages 14 to 20. A splendid collection for \$100.00.

## Select Hybrid-Tea Roses

**Queen of Fragrance.** Flowers large, double and of elegant graceful shape and freely produced throughout the season. The color is a beautiful shell-pink, tipped with silver, bright and pleasing. An outstanding quality of this beautiful Rose is its powerful and delicious fragrance.

**Red Letter Day.** Brilliant scarlet crimson which never fades. Semi-double or sometimes nearly single flowers, of good size. Vigorous grower and a splendid bedder, particularly for massing.

**Reims.** Large flowers of very regular and perfect form, petals round, very large, imbricated like a Camellia. Color flesh white, yellow at base, centre bright nankin shaded orange-apricot, vigorous habit and very free flowering.

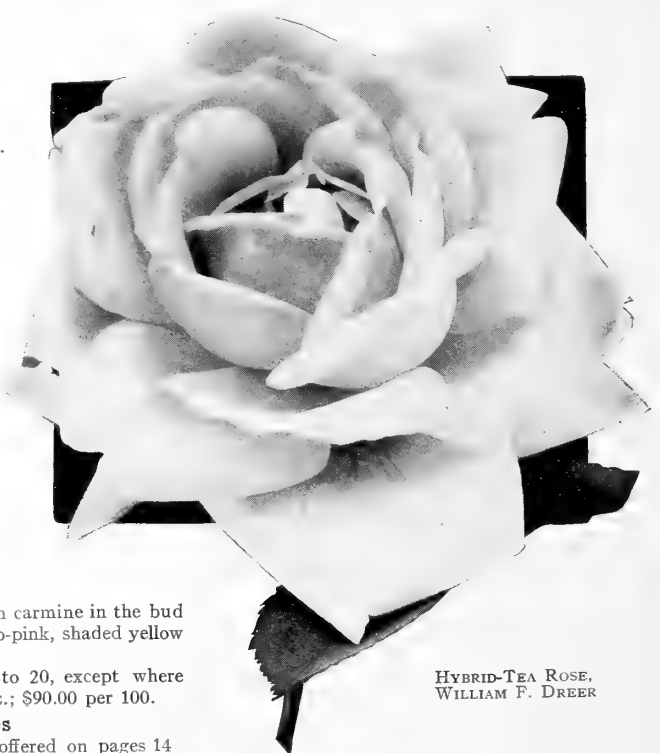
**Rose Marie.** One of the best bedding Roses grown, remarkably free-flowering, producing large, long, ideal buds, which develop into full flowers of beautiful form, of a most pleasing clear rose-pink.

**Royal Red.** Buds very large, moderately long and pointed, flowers large, full double, and of good form, color intense crimson scarlet, vigorous, free and fragrant.

**Ruth.** Orange flushed carmine, a compact free-flowering variety.

**Sensation.** We hesitated to endorse this large red heretofore as we had seen it only under weather conditions which caused the color to purple, but during the past wet cloudy season it proved to be one of the very desirable varieties. The flowers under these conditions were very large, of full double excellent form and of a splendid scarlet-crimson color shading much deeper in the autumn. A strong vigorous grower and very free flowering.

**Shot Silk.** One of the most beautiful of Alex. Dickson & Sons' introductions of 1924, which was awarded the gold medal of the National Rose Society of England. Color orange-rose, over-shot with golden-yellow and flushed soft rose, bud of beautiful shape, the open flowers cupped with reflexing outer petals, growth vigorous and free with beautiful foliage, a sweetly scented Rose of exceptional merit.

HYBRID-TEA ROSE.  
WILLIAM F. DREER



SOUVENIR DE  
CLAUDIUS FERNET





NEW HYBRID-PERPETUAL ROSE, MME. ALBERT BARBIER

**New Hybrid-Perpetual Rose****Mme. Albert Barbier**

(Barbier Bros. 1925)

Introduced two years ago, this remarkable Rose has quickly found its place in popular favor. In its habit of flowering it is as free as many of the popular Hybrid-Tea varieties, its seed parent is Frau Karl Druschki, from which it has inherited a strong, clean, vigorous growth, its buds are long and well formed of a pearly white color suffused with soft, salmony flesh and develop into large, full double imbricated flowers of splendid form which as they expand, show a golden apricot suffused centre. A gem in every respect. \$1.50 each.

**HYBRID-PERPETUAL ROSES**

The varieties listed below are unquestionably the best that can be selected in the Hybrid-Perpetual class which, before the development of the Hybrid-Teas, was the most popular type for garden planting, and even now they dare not be overlooked, but should be used extensively in conjunction with the other sorts, and especially so in localities where the hardiness of the Hybrid-Tea varieties has not been established.

**American Beauty.** Rich dark carmine.

**Anna de Diesbach.** Bright carmine-rose of large size.

**Baroness Rothschild.** Pale satiny-rose, very large.

**Candeur Lyonnaise.** Large white with faint tint of yellow.

**Captain Christy.** Delicate flesh-pink.

**Clio.** Delightful satiny-flesh with deep centre; the flowers are large, globular and borne on long stems.

**Frau Karl Druschki.** This is the ideal hardy white Rose.

**General Jacqueminot.** Brilliant scarlet crimson.

**George Arends.** A beautiful pink variety.

**Gloire de Chedane Guinoiseau.** Large globular vermilion red.

**Mrs. John Laing.** Soft pink of splendid form, exceedingly fragrant and very free flowering.

**Mrs. R. G. Sharman Crawford.** Deep rosy pink, outer petals shaded with flesh, one of the freest bloomers and a splendid Rose in every respect.

**Magna Charta.** Bright pink, suffused with carmine.

**Paul Neyron.** Deep rose, of immense size.

**Prince Camille de Rohan.** Deep velvety crimson-maroon.

**Ulrich Brunner.** A bright cherry red.

**Price.** Any of the above, in extra strong two-year-old plants, \$1.00 each; \$11.00 per doz.; \$90.00 per 100.

**Special Offer.** One each of the above 16 varieties, a splendid collection of these absolutely hardy Roses for \$14.50.

## Two Dr. W. Van Fleet Roses Introduced by the American Rose Society

The two varieties offered below were raised by the late Dr. Van Fleet while connected with the U. S. Department of Agriculture; the descriptions are official from the Department.

**Dr. E. M. Mills** (*Hybrid Hugonis*) (Dr. W. Van Fleet, 1926).

An early-blooming, spreading shrub Rose, 3 to 4 feet high, similar to the graceful Scotch Roses in its habit and in its manner of spreading by underground rootstocks. Foliage is small and deep green, and the new growth is almost thornless, with sharp, straight thorns on the mature wood. Flowers are medium size (2 to 2½ inches across), semi-double, peculiarly globular in shape, and profusely produced along and around the arching branches. They are primrose color, with a pink suffusion which becomes more pronounced in the later blooms.

**Sarah Van Fleet** (*Hybrid Rugosa*) (Dr. W. Van Fleet, 1926).

The plant is of erect and spreading habit, with medium green Rugosa-type foliage. It is a vigorous grower, very hardy, with flowers having three to four rows of petals, opens flat, shows stamens; color, Wild rose-pink; form, cupped; fragrance, moderate; bud, medium size; petalage, twenty to thirty; freedom of bloom and lasting quality, excellent. The Rose is distinct from all the Rugosa hybrids in purity of color and continuity of flowering, and is considered as a decided improvement in the race.

Either of the above varieties, \$2.00 each.

## The Dreer Dozen Hybrid-Tea Roses

Unsurpassed for free and continuous blooming. Described and offered on page 12.

## POLYANTHA AND BABY RAMBLER ROSES

A type of Roses which is very popular for bedding purposes. They form shapely, compact bushy specimens about 18 inches high, producing in great profusion from early in the season until severe frost immense trusses of small flowers.

**Cecile Brunner** (*The Fairy, or Sweetheart Rose*). A Polyantha variety with dainty double little flowers of perfect form produced in many flowered graceful sprays; color a soft rosy-pink on a rich creamy-white ground.

**Chatillon Rose**. A splendid new variety with gracefully formed semi-double flowers in sprays of 15 to 50 or more flowers each. Color silvery crimson-rose gradually passing to a white centre; one of the most distinctive and desirable varieties.

**Erna Teschendorff**. Medium sized bright red, semi-double flowers on dwarf plants, 10 to 15 inches high, very free.

**George Elger**. Buds bright yellow developing into dainty pale creamy yellow blooms of pretty form in graceful sprays.

**Ideal**. The darkest colored of all the Baby Roses, an intense rich lustrous garnet, the flowers are not large but are produced in very large trusses and are very effective.

**Katherine Zeimet**. Very free flowering pure white.

**Lafayette**. An entirely new break in the Baby Rambler type with brilliant cherry-crimson flowers as large as Paul's Scarlet Climber; produced in immense branched trusses frequently 40 to 50 flowers on one branch, free and continuous blooming.

**Le Marne**. A beautiful semi-double with very pretty, good sized flowers, bright salmon-rose at the edges, rosy blush at the centre, exceptionally free and continuous flowering; one of the prettiest.

**Louise Walter** (*Baby Tausendschoen*). Identical in color with the popular climbing Tausendschoen, a soft tender tone of pink, flowers 1½ to 2 inches in diameter, produced throughout the season in trusses of 10 to 20 flowers each.

**Miss Edith Cavell**. Brilliant scarlet-red with darker shadings, one of the most desirable deep colored varieties.

**Mme. Norbert Levasseur** (*Crimson Baby Rambler*). Similar in color to the climbing Crimson Rambler. Very popular.

**Mrs. Cutbush**. Almost identical in color with the Dorothy Perkins Rambler and always in bloom.

**Orleans**. One of the best, flowers of comparatively large size of brilliant geranium-red, becoming suffused with rose as the flowers mature, and large white centre; a very pretty color combination.

**Price.** Strong two-year-old plants, 75 cts. each; \$7.50 per doz.; \$60.00 per 100. One each of the 14 varieties for \$8.50.

## PERPETUAL FLOWERING BEDDING ROSES

**Gruss an Aachen**. A very distinct type of Polyantha Rose with exceptionally large flowers for this type, always a mass of bloom throughout the season, color flesh pink with salmon and yellow shadings, very effective as a bedder.

**Gruss an Teplitz**. This is a Rose for everybody, succeeding under the most ordinary conditions. In color it is of the richest

**Price.** Any of the above strong two-year-old plants, 75 cts. each; \$7.50 per doz.; \$60.00 per 100. One each of the 3 sorts for \$2.00.

## TWO REMARKABLE NEW SINGLE BEDDING ROSES

The two varieties here described of the Polyantha type are unlike all other single flowering varieties; they are of strong, vigorous habit of growth, forming bushy specimens from 2 to 3 feet high which are in flower throughout the season; the flowers produced in much branched trusses, are two inches or more across, and not only hold their brilliant colors without fading, but last on the plant without shedding for a week or ten days. Splendid subjects for planting either in the mixed border or among shrubbery as individual specimens and particularly valuable for massing in beds of solid color.

**Else Poulsen**. A most beautiful tone of pure rose-pink.

**Kirsten Poulsen**. Rich bright scarlet with golden anthers.

**Price.** \$1.00 each; \$11.00 per doz.; \$90.00 per 100.



POLYANTHA ROSE CECILE BRUNNER (*Sweetheart Rose*)

**Superba**. Unquestionably the richest colored dark variety yet introduced, a brilliant, rich, deep carmine. The individual flowers are of medium size, of most perfect imbricated form, a specimen bloom, and are carried in large branching trusses; very free flowering.

scarlet, shading to a velvety crimson; very fragrant, a free, strong grower and in bloom all the time.

**Hermosa**. Less than twenty years ago this was perhaps the most popular bedding Rose and it still has many friends on account of the freedom with which its medium sized, perfect shaped double, bright pink flowers are produced, it rarely being out of bloom.



TEA ROSE, LADY HILLINGDON

## Select Tea Roses

Tea Roses have always been admired for their delicious fragrance and for their delicacy of coloring, but many of the varieties have now been superseded by the Hybrid-Tea class.

**Harry Kirk.** A splendid Rose of free-branching habit, flowering continuously; the blooms are large, of great substance; the form is perfect, the buds long and elegant; color sulphur-yellow, passing to a lighter shade at the edges of the petals.

**Lady Hillingdon.** Coppery apricot-yellow, beautiful in the bud; a strong grower and very free-flowering.

**Maman Cochet.** An extra strong grower, producing its large buds and flowers in the greatest profusion; color deep rose-pink; very double and exquisite in bud, or when full-blown.

**White Maman Cochet.** Identical to the above except in color which is a creamy white.

**William R. Smith.** One of our best bedding Roses; flowers large, of elegant form; creamy-white with light rose shadings.

**Winnie Davis.** Very free flowering, apricot shaded pink passing to flesh pink at edges.

**Price.** Any of the above, \$1.00 each; one each of the 6 sorts, \$5.00.

## Austrian and Hybrid Brier Roses

**Austrian Copper.** Bright coppery-red, reverse of petals golden yellow.

**Beaute de Lyon.** Forms a large, globular flower of splendid shape, of a coral-red color shaded with yellow.

**Harrison's Yellow.** Fine double golden-yellow flowers.

**Juliet.** Outside of petals old gold, interior rich rosy-red changing to deep rose as the flowers expand; of delicious fragrance.

**Persian Yellow.** Medium sized deep yellow double flowers, very hardy; to flower freely should receive little or no pruning.

**Price.** Strong two-year-old plants, 75 cts. each.

## Lord Penzance's Hybrid Sweet Brier Roses

These lovely hybrids are crosses between the common Sweet Brier and various other Roses, and like their parent, the foliage is deliciously scented. Perfectly hardy. For best effect should be grown as pillar Roses.

**Amy Robsart.** Splendid deep rose color.

**Anne of Geirstein.** Dark crimson, of graceful habit.

**Bradwardine.** Clear pink flowers of fine form.

**Lady Penzance.** Beautiful soft tint of copper with metallic lustre, the base of each petal is yellow.

**Lord Penzance.** Soft shade of fawn or ecru, passing to a lovely lemon-yellow in the centre, sometimes toned with a most delicate pink; a good grower and abundant bloomer, very sweet-scented.

**Price.** Strong two-year-old plants, \$1.00 each. Set of 5 varieties, \$4.50.

## Moss Roses

The beauty of the Moss Rose consists in the delicate mossy covering which surrounds the buds. Moss Roses should be pruned sparingly; cut out the old wood and merely cut back the growth of last year.

**Blanche Moreau.** Large pure white.

**Crested Moss.** Rose color, beautifully crested.

**Henry Martin.** Fine crimson, very vigorous.

**Princess Adelaide.** Bright silvery rose, large.

**Salet.** Large, full double, light rose.

Extra strong two-year-old plants, 75 cts. each.

Set of 5 sorts, \$3.50.



SINGLE BEDDING ROSE, ELSE POULSEN. (See page 23.)

### New Hybrid Rugosa Roses

**F. J. Grootendorst.** This might properly be called a Rugosa Baby Rambler, it being a cross between Rugosa and the crimson Baby Rambler. Imagine a shrub-like Rugosa Rose covered with trusses of crimson Baby Rambler Roses and you will have a fair conception of this new hybrid variety. It is not a Rose that you want to plant in with your bed of Hybrid-Tea or Hybrid Perpetual Roses, but is valuable to plant as an isolated specimen or in a mass in a bed in an exposed position or in the shrubbery border or use it for an everblooming hedge for which purpose it is admirably adapted. It is absolutely hardy and continues in bloom until late in the fall. \$1.00 each; \$10.00 per doz.; \$75.00 per 100.

**Pink F. J. Grootendorst.** Identical with the above variety, except in color, which is a splendid clear pink. \$1.25 each; \$12.00 per doz.; \$90.00 per 100.

**Agnes.** Coppery yellow buds and flowers turning to amber yellow as they develop, the only Rugosa of a yellow color. The flowers are of good size for this type, sweetly scented and produced freely in early summer. \$2.50 each.

### Ramanas or Rugosa Roses

These lovely Roses are absolutely hardy and form sturdy bushes 4 to 6 feet in height, covered with handsome crinkled flowers. The single sorts flower almost continuously, and are equally as attractive during the autumn and winter when covered with their large brilliant red seedpods. Of healthy, vigorous growth and equally desirable alike as single specimens, particularly among shrubs or for making a hedge. Rugosa Roses require no pruning, merely cut out dead and superfluous wood.

**Rugosa.** Single rosy-carmine.

— **Alba.** Single pure white.

**Conrad Ferdinand Meyer.** Large double clear silvery rose.

**Blanc Double de Coubert.** Fine double pure white.

**Hansa.** Attractive double reddish violet.

**Sir Thomas Lipton.** Exceptionally strong grower with very large double white flowers.

**Price.** Any of the above varieties, 75 cts. each; \$7.50 per doz.; \$60.00 per 100.



ROSA HUGONIS



TRAILING ROSE, MAX GRAF

### New Hybrid Brier Rose Buisson d'Or or Golden Bush

Appropriately named Golden Bush which is suggestive of its habit of growth and freedom of flowering. The plant grows from 3 to 5 feet high, forming a shapely bush, every branch of which is covered for its entire length with full double, sweetly scented, shapely flowers from 2½ to 3½ inches in diameter; these are of a pure deep yellow turning to canary yellow as they fully develop. Distinct from all other Roses and a particularly valuable plant to use in connection with shrubs. \$1.50 each.

### Rose Species

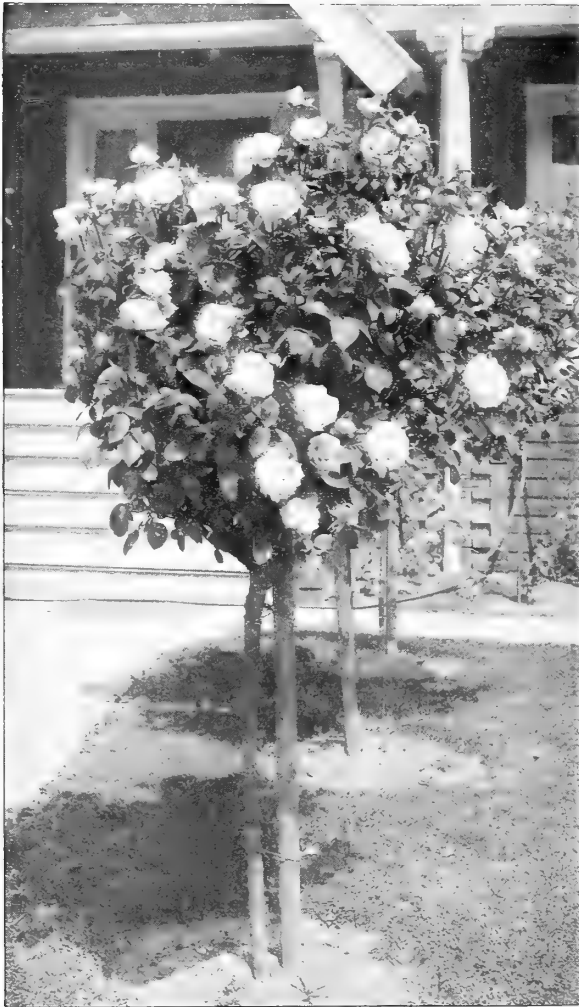
**Rosa Hugonis.** This species, from China, is unlike any other Rose. It is of shrub-like habit of growth and naturally forms symmetrical bushes about 6 feet high, and the same in diameter, and while not suited to plant in the Rose border, it is an invaluable subject when planted in connection with other shrubs or as single specimen in the garden.

Its delicate yellow single flowers are produced on long arching sprays early in May, every branch of the previous season's growth becomes lined on both sides to the very tips with these attractive flowers, and after it has finished flowering it remains an attractive decorative bush for the balance of the season; perfectly hardy. Strong two-year-old plants, \$1.00 each.

**Rosa Moyesi.** A strikingly beautiful species, similar in habit of growth to Rosa Hugonis but growing from 6 to 10 feet high with attractive, brilliant, single, deep blood-red flowers, in June. \$1.00 each.

**Rosa Xanthina.** Bright yellow double flowers about two inches across, really a double flowering Hugonis with better foliage and lasts in flower for a much longer period. \$1.00 each.

**Rosa Centifolia.** The old fashioned sweet-scented Cabbage or Provence Rose. We can supply both pink and white at \$1.00 each.



TREE-SHAPED ROSES

### Tree-Shaped Roses

We are pleased to be again able to offer a nice assortment of these in real good plants with stems 36 to 42 inches high.

Betty Uprichard  
Columbia  
Frau Karl Druschki  
General MacArthur  
George C. Waud  
Gruss an Teplitz  
Independence Day  
Jonkheer J. L. Mock  
Kaiserin Augusta Victoria  
Killarney Double White  
Lady Alice Stanley  
Lady Ursula  
Los Angeles  
Mrs. Aaron Ward  
Miss Cynthia Forde

Magna Charta  
Mme. Butterfly  
Mme. Caroline Testout  
Mme. Edouard Herriot  
Mrs. Henry Morse  
Mrs. John Laing  
Ophelia  
Premier  
Radiance  
Red Radiance  
Rose Marie  
Souv. de Claudius Pernet  
Souv. de Georges Pernet  
Souv. de H. A. Verschuren  
Victory

Price. Any of the above, \$3.50 each; \$35.00 per doz.

The following three varieties can be supplied in Dwarf Standards. Stems about 24 inches high.

Chatillon. Gruss an Aachen. Orleans.  
Price. \$2.00 each.

### Tender and Climbing Hybrid-Tea Roses

While not as a rule as free flowering as the bush type of Hybrid-Tea Roses, these climbing forms produce a large crop of beautiful flowers in June, with a liberal scattering of blooms throughout the season. The tender sorts are not hardy in the latitude of Philadelphia, except in favored positions, or with protection; especially adapted to covering rafters, etc., in greenhouses, or for outdoor culture south of Philadelphia.

**Black Boy.** An Australian introduction where it has become a great favorite; a sweet scented large fiery scarlet overlaid with blackish maroon; one of the hardiest.

**Climbing Caroline Testout.** Combines all the good points of the popular pink bush Rose in climbing form.

**Gloire de Dijon.** An old and still valuable favorite, flowers bluish with salmon shadings.

**Gwen Nash.** One of the prettiest climbers we know, a large semi-double flower opening out quite flat and of a most beautiful soft shell pink, very free flowering.

**Golden Vision.** Has the rich color of Marechal Niel on first opening, passing to a creamy white when fully developed.

**Kitty Kininmonth.** An Australian variety of an attractive bright fadeless pink with large buds and very large cupped flowers; very vigorous.

**Climbing Hoosier Beauty.** Beautifully shaped buds of large size, of a rich dazzling scarlet.

**Climbing H. V. Machin.** A counterpart of the rich scarlet bush variety, but of very strong climbing habit.

**Climbing Kaiserin Augusta Victoria.** A climbing form of this popular white Rose.

**Climbing Lady Ashtown.** The best of all the climbing Hybrid-Tea varieties. A plant in the most exposed part of our Nursery, with very little protection, has withstood many winters, producing not only an immense crop of its very large soft rose-colored flowers in June, but continuing to bloom almost without intermission until the end of the season.

**Climbing Lady Hillingdon.** Beautiful long well formed buds of a luminous coppery shade of apricot-yellow. This is the most tender in this collection.

**Climbing Los Angeles.** A strong climbing form of the popular Rose Los Angeles, producing equally beautiful sweet scented flowers of a luminous flame-pink with golden coral suffusion.

**Marechal Neil.** Superb; bright golden-yellow.

**Miss Marion Manifold.** Also comes from Australia very highly recommended; a brilliant rich crimson, said to be the finest climbing Rose yet produced; quite hardy.

**Climbing Miss Lolita Armour.** Large coral-red with golden coppery suffusion. \$1.50 each.

**Climbing Mme. Edouard Herriot.** A climbing form of the popular coral pink Daily Mail Rose. \$1.50 each.

**Climbing Mrs. Aaron Ward.** A climbing form of this popular Indian-yellow variety.

**Paul's Lemon Pillar.** Well formed, large, fragrant flowers of a pale sulphur-yellow.

**Climbing Rose Marie.** Climbing form of the attractive rose-pink bedding variety.

**Souvenir de Claudius Denoyal.** Fine as a pillar Rose, a rich glistening crimson-red tinted with vermilion of enormous size of cupped shape, the long buds are of a brilliant velvety red.

**Climbing Souvenir de H. A. Verschuren.** A very strong growing climbing form of this beautiful yellow, with flowers larger than in the bush form. \$1.50 each.

Price. Any of the above except where noted, in strong two-year-old plants, \$1.00 each.

## Newer Climbing and Rambler Roses

**Albertine.** A remarkably free-flowering rambler with nicely shaped buds expanding to moderately double flowers of splendid form, nearly four inches in diameter; of a pleasing cameo-pink with silvery suffusion, sweetly scented; foliage rich deep glossy green.

**Bloomfield Exquisite.** One of Captain Thomas' Hybrids. A cross between Gloire de Dijon and Gruss-an-Teplitz. Buds long and pointed, flowers of large size, very double, of strong La France fragrance, and of a solid clear pink color, usually borne singly on stems of medium length. A profuse and perpetual bloomer. \$2.00 each.

**Bishop Darlington.** A perpetual flowering climber growing about 8 ft. high, with ovoid buds of medium size; these are of an attractive orange-red opening to fair-sized semi-double cupped flowers, flesh pink with yellow glow at centre, the reverse with light canary base, giving a pleasing bicolored effect; sweet fruity scent. One of Captain Thomas' Hybrids which has been found perfectly hardy in Pennsylvania. \$2.00 each.

**Emily Gray.** In this we have a real yellow climbing Rose. The buds are long and pointed, of splendid shape; in color a beautiful light orange-yellow, changing to pale orange as they expand; they are borne on stiff stems of sufficient length for cutting, these stems are of a crimson-red color which together with the unusually dark green, glossy, holly-like foliage, adds a charm to the flowers and makes the plant, even when out of bloom, a most ornamental subject. Requires protection north of Philadelphia.

**Ernestine Cosme.** A unique single flowered variety of pretty form and of a delicate soft pink which are produced in great pyramidal-shaped, many flowered sprays, in greatest profusion; a vigorous healthy grower.

**Jacotte.** Color shrimp-pink or light salmon-orange shaded golden yellow at base; flowers fully 2½ inches in diameter, delightfully scented; rich dark green glossy disease-resisting foliage, entirely distinct from all others and a color which will make it a favorite.

**Le Reve.** Another yellow pillar Rose on the style of Star of Persia. Experts are not agreed as to which of the two varieties is the most desirable. Dr. J. Horace McFarland, editor of the American Rose Annual, speaking of this variety as it appeared to him at his Breeze Hill Gardens on May 31st, says, "Le Reve is perfectly beautiful today. This is a yellow rose requiring no excuse for any fading, for it is yellow and stays yellow. The foliage is good, the plant is good looking, and the fragrance to me is delightful."

**Mermaid.** Beautiful large single creamy white flowers, 3 to 4 inches in diameter. A most attractive free and more or less perpetual flowering variety. A splendid pillar Rose, but not dependably hardy in this latitude. It requires careful winter protection.

**Mme. Jenny.** A very strong growing climber with large, healthy disease-resisting foliage with flowers two inches and over in diameter borne in clusters of from 5 to 7 flowers each; these are cup-shaped, quite full, of a delicate satiny rose color with a delightful fragrance, not unlike the old-fashioned sweet-scented Cabbage or Provence Rose. \$1.50 each.



NEW CLIMBING ROSE, EMILY GRAY

**Phyllis Bide** (*New Everblooming Climber*). This really perpetual flowering climber was awarded a Gold Medal at the National Rose Society's Show at Glasgow, Scotland, in 1924. The feature of this variety is that it blooms continuously throughout the summer and fall and while the dainty flowers are of small size they are of exquisite form in bud, opening with gracefully reflexed petals and are produced in long loose sprays; in color a pale gold at base flushed and shaded pretty rosy-carmine towards the edges. \$1.50 each.

**Solarium.** In single flowering climbers this is a gem. It is of the same type as Hiawatha on which it is a decided improvement, the flowers being larger, more freely produced and of more brilliant coloring, an intensely rich crimson-scarlet.

**Star of Persia.** A brilliant new Rose with flowers on the order of the lovely old Harrison's Yellow, semi-double, bright yellow, and about 3 inches across. It makes a striking low climber or pillar Rose from 8 to 10 feet high, bursting into showers of sparkling bloom in June. It does not fade and the flower trusses last several weeks.

**The Beacon.** A distinct and effective novelty, bright fiery-red with white eye in the way of American Pillar, single and semi-double, produced in large clusters, handsome foliage.

**Price.** Any of the above new varieties, except where noted, in strong plants, \$1.00 each; the set of 13 sorts for \$14.00.

## HARDY CLIMBING AND RAMBLER ROSES

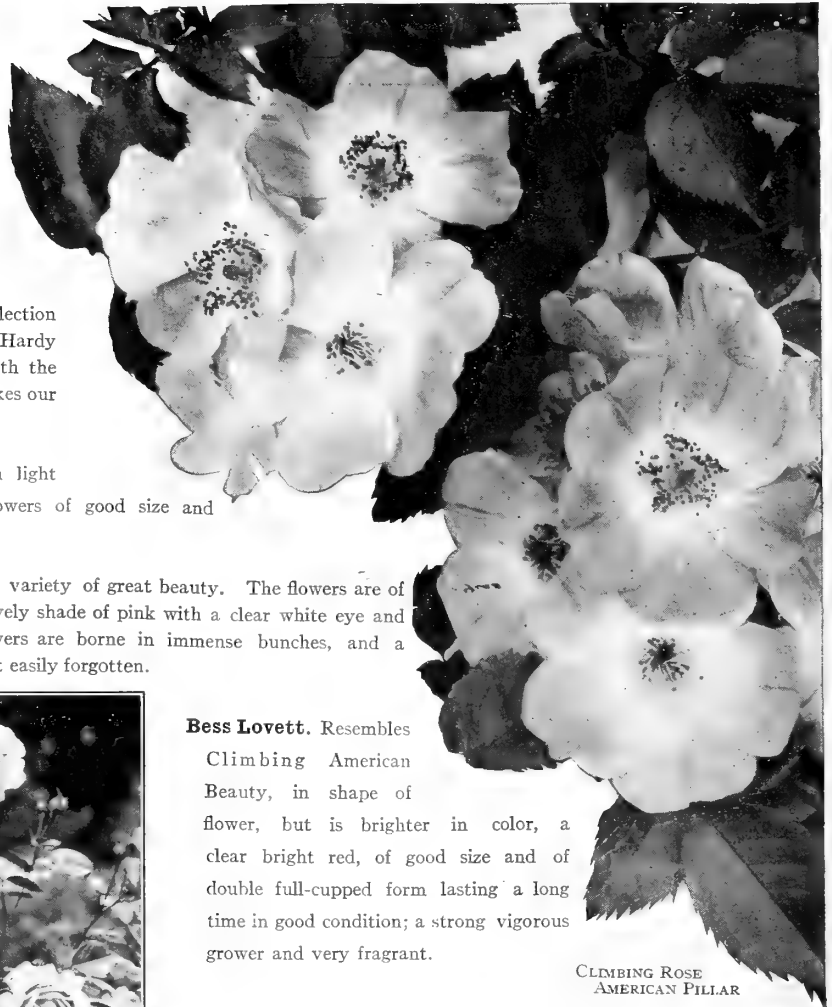
We offer on this and the next page a selection of the best standard varieties of Hardy Climbing and Rambler Roses, which with the splendid new sorts offered on page 27 makes our collection of these very complete.

**Alida Lovett.** Bright shell-pink with light yellow shadings at base of petals, flowers of good size and quality. A most desirable climber.

**American Pillar.** A single flowering variety of great beauty. The flowers are of large size, 3 to 4 inches across, of a lovely shade of pink with a clear white eye and cluster of yellow stamens. These flowers are borne in immense bunches, and a large plant in full bloom is a sight not easily forgotten.



CLIMBING AMERICAN BEAUTY ROSE



CLIMBING ROSE  
AMERICAN PILLAR

**Bess Lovett.** Resembles Climbing American Beauty, in shape of flower, but is brighter in color, a clear bright red, of good size and of double full-cupped form lasting a long time in good condition; a strong vigorous grower and very fragrant.

**Christine Wright.** A most exquisite Rose, of strong climbing habit. The flowers are double, from 3½ to 4 inches in diameter, borne singly and in clusters, of perfect form, beautiful in the bud and in the fully expanded flower; color a most refreshing bright wild-rose pink.

**Climbing American Beauty.** Its name is somewhat misleading, but it is one of the best climbing Roses; a strong healthy vigorous grower, frequently making shoots from 10 to 12 feet long, and good sized flowers for a climbing Rose that blooms so freely; color rich rosy crimson, of splendid form and good substance.

**Dorothy Perkins.** Soft shell-pink, flowering profusely in large clusters, very fragrant and lasting, a grand Rose in every way.

**Dr. Robert Huey.** Similar in habit of growth and form of flower to Paul's Scarlet Climber, but of an intense dark crimson color, and when fully expanded shows its numerous golden stamens, making a beautiful color combination.

**Price.** Any of the above in strong two-year-old plants, 75 cts. each; \$7.50 per doz.; \$60.00 per 100.

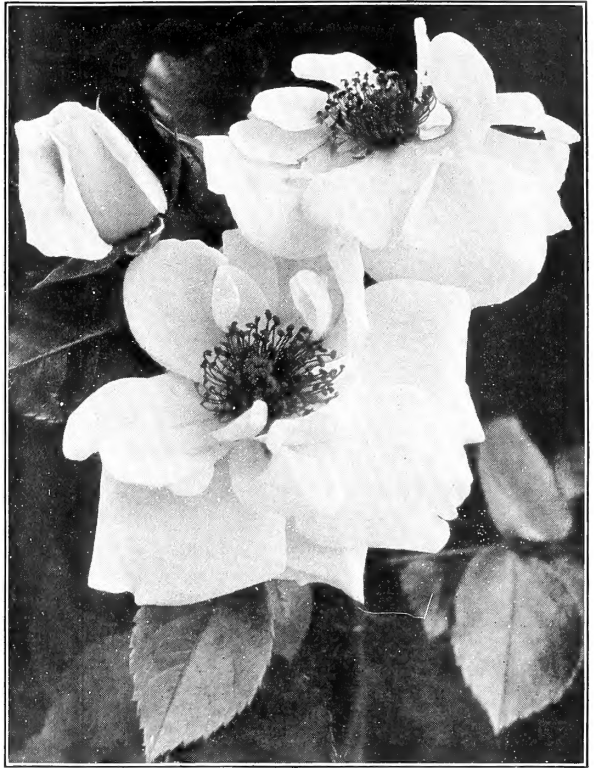


## HARDY CLIMBING AND RAMBLER ROSES

**Dr. W. Van Fleet.** A Rose, which on account of its dainty color and exquisitely shaped buds and flowers, has become a great favorite. The long pointed buds are of a rich flesh-pink on stems 12 to 18 inches long; splendid for cutting. A strong vigorous grower, flowers each on much branched canes, the plants being literally covered from top to bottom with bloom. It is of strong climbing habit and perfectly hardy. This is one of the most popular climbing Roses.

**Excelsa.** This has superseded the Old Crimson Rambler, it is vigorous in growth with healthy dark glossy green foliage. The flowers are very double, produced in large trusses. The color is intense crimson maroon, the tips of the petals tinged with scarlet.

**Gardenia.** Buds bright yellow, opening double flowers of cream color; incurving towards evening to the shape and color of a Cape Jessamine, hence its name.



RAMBLER ROSE, SILVER MOON



ROSE, PAUL'S SCARLET CLIMBER

**Hiawatha.** A brilliant single, ruby carmine, with a clear white eye and a mass of golden stamens—a glowing combination of colors.

**Mary Lovett.** Large well-formed flowers of pure waxy white, sweetly scented.

**Mary Wallace.** Well formed, semi-double flowers of a bright clear rose-pink with salmon base to the petals, flowers large, generally exceeding four inches in diameter, very free flowering.

**Papa Gouchault.** A pure crimson-red holding its color under all weather conditions and exceptionally hardy.

**Paul's Scarlet Climber.** No other climbing Rose can compare with this for brilliancy of color which is maintained until the petals fall, the flowers, a vivid scarlet, are of good size, semi-double, very freely produced in clusters of from 3 to 20.

**Roserie (Red Tausendschoen).** Of the same habit of growth and flowering as Tausendschoen, but of a deeper and more even shade of cerise-pink, or carmine.

**Silver Moon.** Different from all other Roses, with beautiful semi-double flowers four and a half inches and over in diameter; pure white in color, petals of great substance, beautifully cupped, forming a Clematis-like flower. The large bunch of yellow stamens in the centre adds to its attractiveness.

**Tausendschoen.** A popular variety with large flowers with wavy azalea-like petals. In color it is a most delicate shade of soft pink when first opening, changing to carmine on the reverse of petals when fully expanded.

**Wichuraiana (Memorial Rose).** Pretty, fragrant single pure white flowers with yellow stamens followed in fall by bright red hips or berries, a good Climbing Rose where no great height is required, especially valuable where a trailing plant is desired, forming a dense mat of almost evergreen foliage.

**Price.** Any of the Hardy Climbing and Rambler Roses offered on this page and page 28, in strong two-year old plants, 75 cts. each; \$7.50 per doz.; \$60.00 per 100.

**SPECIAL OFFER.** One each of the 19 Hardy Climbing and Rambler Roses, a splendid collection for \$11.50.

# DREER'S CULTURAL NOTES ON

## *Garden Roses*

Roses are one of our principal specialties, and we aim to offer not only the novelties of the greatest Rose specialists of the world, but also a complete list of all the worth-while standard varieties.

Our Roses are all extra strong two-year-old American field-grown, budded or grafted plants, and while some planters prefer plants grown on their own roots on account of the possibility of budded plants developing wild suckers, this will rarely occur with the careful de-eying of the stocks which are used for this purpose, and if the deep planting as directed is followed, if a wild shoot should appear it is readily distinguished by the most casual observer, and should be removed close to the root. Much can be said in favor of budded plants, being more vigorous, producing finer blooms, coming into bearing sooner, they are as permanent and hardier than those on their own roots, while many of the very finest varieties will not succeed at all when grown on their own roots except in very favorable locations, such as on the Pacific Coast, and even there, preference is given to budded plants by all who have had any experience with the different classes of stock.

### *Spring Planting*

While our regular customers are familiar with the grade of Roses which we send out, we wish to direct the attention of those who have never planted our stock, to the manner in which these plants are prepared. All of our Roses are field-grown plants; in Fall they are carefully dug, planted in pots and stored in cold greenhouses or cold frames, where artificial heat is only used to exclude the most severe frost. Under this treatment the plants develop in a natural way and are much superior to stock which has been carried dormant beyond April 1st, by any method of retarding which has yet come under our observation and also vastly superior to plants which have been grown in a high temperature into an unnatural and weakened growth. As a rule we can make Spring delivery until about the first of April in dormant plants with bare roots the same as in the fall, but after this date, they are potted plants, shipped with the ball of soil retained or held in position by a paper carton.

We believe we are conservative in stating that fully 75 per cent. of the Roses that are planted each season are set out in the Spring of the year, and this with entirely satisfactory results, providing the stock has been properly prepared for the purpose as described above. For best results Spring planting should be done as early as possible.

### *Fall Planting*

When stock is wanted for fall planting, we supply plants as dug from the fields. This cannot, however, be done until late in the autumn after the plants have become well ripened, which is usually not until the latter part of October or early in November, but you need not hesitate to plant late, even if you are located where there is danger of the ground freezing before the plants reach you. Prepare your beds and cover them with a few inches of loose litter which will enable you to plant with perfect safety even after freezing weather sets in. These newly set-out plants must, of course, be protected the same as established plants as recommended further on under the heading of "Winter Protection."

In case the plants should reach you too late to plant or at such time when it is not convenient to set them out in their permanent positions, select a well-drained position in your garden where you can dig a slanting trench twelve inches deep at the root end, lay your plants in this trench in a slanting position, fill in the soil between the roots as well as between the branches carefully, firming this soil as you go along, the roots when thus "heeled in" should have a covering of at least twelve inches of soil, tapering to 4 or 5 inches at the tops. This mound of soil at the approach of severe freezing weather, should be covered with two or three inches of preferably Oak leaves, straw, or loose stable litter, or similar material held in place by a few evergreen branches, narrow boards, or anything that will prevent the wind from blowing this covering off. Buried in this manner the plants will keep in perfect condition until early spring when they must be planted in their permanent positions.

(30)

### *Situation*

Good Roses can be grown in any open sunny position; they should have full exposure to the sun at least two-thirds of the day; if possible sheltered from north winds and located so that the roots of neighboring Trees and Shrubs will not penetrate the beds and impoverish the soil at the expense of your Roses.

### *Preparation of the Beds*

Some authorities recommend elaborate preparation of the soil. This is not necessary. Roses will grow and give good returns in any fertile garden soil that is well drained. It is not necessary to excavate the beds 2 or 3 feet deep and fill in with specially prepared soil, excepting where the soil is very sandy or otherwise unfit for good development. Roses prefer a heavy, fibrous loam, but the ordinary fertile garden soil deeply dug, at least two spades deep, with a liberal amount of well-decayed cow or stable manure dug in and well mixed with the soil is all that is necessary, or if such manure is not available, use Shredded Cattle Manure as offered in our various catalogues in the proportion of one half pound to the cubic foot of soil; a small amount of Bone Meal, about 3 ounces to the cubic foot, may be included at the same time: Providing the ground is well drained, if this is not naturally the case, artificial drainage should be provided. This can be done by excavating the soil 2½ feet deep, filling in the lower 6 inches with broken stone or rubble, and replacing the soil on top of this.

It is always advisable that no matter whether you plant in the autumn or the spring, that the beds be made ready some time in advance of the date at which you expect delivery of the plants, so that they may be planted promptly on receipt.

### *Size of Beds*

Beds not over 5 feet wide are preferable to wider borders. This will enable you to cut the flowers, prune, and do such other work as may be necessary without walking over the beds. In naturally well-drained soil we prefer to have these beds so that when planted the soil is about an inch lower than the surrounding ground, but where the drainage is not absolutely perfect, it is better to have them raised 2 or 3 inches above the surface.

### *Time of Flowering*

Hybrid-Perpetual varieties bear their main crop of bloom in May and June, with a few scattering flowers during the summer and autumn. The Wichuraiana varieties bloom during June and July. Rugosa and Hybrid Rugosa flower nearly the whole summer.

Teas, Hybrid-Teas, and Baby Ramblers bloom continuously throughout the summer and autumn until frost.

Hardy Climbing Roses, Moss and Briers flower during May and June.

## *Pruning*

This should be done in the early spring before growth starts. The Roses sent out by us in the spring require no further pruning that season; they are ready to plant as received. Dormant Roses supplied in the fall should have the tallest branches headed in when planted, to prevent the wind from switching them about and loosening the plants in the soil, but the final pruning should not be done until spring when uncovered.

Hybrid-Tea varieties should be severely pruned. Cut the stronger shoots back to 6 to 10 inches from the ground, while all weak and thin wood should be removed entirely.

Tea Roses do not require the severe pruning recommended for the Hybrid-Tea varieties. Trim out all thin wood and cut the stronger shoots back to a prominent eye.

Hybrid-Perpetual varieties should have all weak growth removed, and if quality of bloom is desired, cut back the strong canes to within 8 or 10 inches of the ground, but if quantity of bloom is desired, leave the canes from 2 to 3 feet in length, according to their strength.

Baby Ramblers do not require pruning; simply remove the past season's flower stems.

Rugosa and Briers require no pruning; merely cut out dead and superfluous wood.

Moss Roses should be pruned sparingly. Cut out the old wood and merely cut back the growth of the previous year.

Hardy Climbing, Rambler and Wichuraiana Roses require no pruning in the spring beyond the cutting out of very old or dead wood and the shortening of the laterals and long canes to make the growth conform to the space to be covered, but a severe pruning in July is beneficial. This should be done directly after they have finished flowering. The cutting away of the old flowering wood on these climbers directly after they have finished flowering will encourage a vigorous growth which will give an abundance of bloom the following season.

Climbing Hybrid-Tea Roses do not require severe pruning. Cut out all thin wood and trim the strong shoots back to prominent eyes.

## *Planting and Summer Care*

While late fall planting wherever this can be done is preferable, but fully seventy-five per cent. of all the Roses planted each season are set out in the spring, and this with excellent results. In spring planting, we recommend whenever possible to do this early. The sooner the plants are set out after danger of severe frost is over, the better the results.

Tea and Hybrid-Tea varieties should be set 18 inches apart; Hybrid-Perpetual varieties 2 feet apart, and all should be 8 to 10 inches from the edge of the bed.

When the plants are supplied from pots, as is the case in the spring, they should be set so that the ball of earth is about 1½ inches below the level of the ground. Plants furnished in the fall in a dormant condition are supplied with bare roots; that is, without soil. In planting these, they should be set at such a depth that the point of union, or where the bud has been inserted on the stock, which is readily discernable, is about 2 inches below the surface of the soil after planting. Firm the soil well around the roots and give a thorough watering. Throughout the summer the surface of the bed should be cultivated weekly. If this is done, watering will rarely be necessary. It is also a good plan to cover the bed early in the summer, before the weather becomes hot, with about three inches of strawy manure or tobacco stems. This keeps the bed cool and prevents evaporation of the moisture, thereby helping the plants to produce a succession of bloom throughout the summer and autumn months. Some growers cover their beds, as hot weather sets in, with about 2 inches of peat moss. This is a non-conductor of heat and cold and will not only keep the moisture in the ground by protecting it from the sun's absorbing rays, but will also greatly reduce the actual temperature of the bed.

## *Winter Protection*

In this latitude we have found the most satisfactory method of protection is to draw up a mound of soil, from eight to twelve inches high, around the base of the plant, thus giving the eyes at the base of the plant the desired protection. Cover the entire bed, after the ground begins to freeze, with any loose material such as leaves, preferably Oak leaves, strawy manure, evergreen boughs or corn stalks. The idea is not to keep the ground from freezing but to prevent the alternate freezing and thawing which is so injurious to all plants.

In more severe climates, a heavier covering is all that is required. Care and judgment must be used in the removal of this covering in the spring according to weather conditions. Leaving the plants covered too long may cause just as serious loss or worse than removing it too early. In the latitude of Philadelphia it is usually safe to uncover about the middle of March, though in unusually late seasons it may be desirable to let the covering remain until the end of that month.

Tree-shaped Roses should be protected by digging sufficient soil away from one side of the roots to enable one to bend or lay the tree flat on the ground. Then cover the roots and the head with sods or soil. The stem will need no protection.

Climbing Roses may also be detached from their support, laid flat on the ground and covered with sods or soil in the same manner.

## *The Life of Roses*

Hybrid-Perpetual, Moss, Baby Rambler, Brier, Rugosa and Hardy Climbing Roses, as a rule, are good for a generation or more after once planted, but with the now so popular Hybrid-Tea Roses, no matter how carefully protected, some losses must be expected each season, and this loss is sometimes in apparently strong, vigorous plants for which it is difficult to assign any reason. However, even with such occasional losses, we cannot too strongly recommend the planting of this type of Roses, which not only produce flowers of the highest quality and of most varied and pleasing colors, but they also give such an abundance of bloom continuously from early in the summer until stopped by severe frost that the occasional loss of a few plants amounts to nothing compared with the greater pleasure obtained from them in the high quality and abundance of flowers which they furnish.

## *Enemies*

When grown under favorable conditions, Roses are not so apt to be attacked by insect pests or other troubles as when half-starved or otherwise neglected.

Mildew and Black Spot are the more difficult troubles to combat. For these fungous diseases the use of Fungitrogen, if a spray application is preferred, is recommended, or the All-In-One Mixture for dusting. While there are no materials known to be a positive cure for fungous troubles upon plants grown out of doors, either of the above used at the proper time will serve as preventatives, at the same time holding in check many insect pests. Spraying or dusting should be started early in the season as the foliage develops, following with regular applications at one week to ten day intervals.

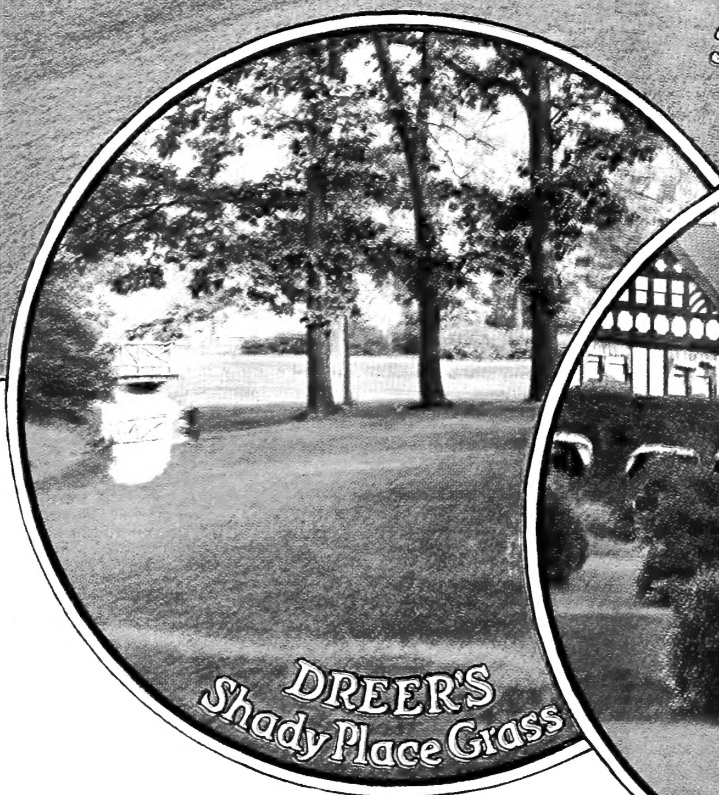
Green Fly or Aphis may be readily controlled with the All-In-One Dust or any other nicotine preparation such as Black Leaf 40.

Rose bugs and beetles, there are a number of preparations available for their control each giving more or less satisfaction, but the more definite plan is to resort to the hand picking of such insects.

We offer in our several catalogues quite an assortment of insecticides and fungicides, among which are included those suggested above, as well as others equally effective, together with the proper apparatus for spraying and dusting.



*The "DREER"  
Lawn Grass*



*DREER'S  
Shady Place Grass*



*DREER'S  
Terrace Grass*

**DREER'S FAMOUS  
GRASS MIXTURES**

*We offer below but three of our Grass Mixtures. For complete list see our Garden Book for 1928. Copy free on request.*

**The "Dreer" Lawn Grass**

This is by far the best mixture of Grass. It is prepared from our own formula, and is a careful blending of varieties adapted to producing the thick growth and velvety appearance so much sought after. For the convenience of our customers, we put this seed up in various sized packages from a single pint, which is sufficient to cover 100 sq. ft. of ground to such quantities as are required for seeding large lawns, where 6 bushels of seed to the acre are required. Price, including delivery, 30 cts. per pt.; 50 cts. per qt.; \$1.50 per 4 qts.; \$2.75 per peck. By express or freight at customers' expense, \$5.00 per 1/2 bushel; \$10.00 per bushel (20 lbs.); \$47.50 per 100 lbs.

**Dreer's "Shady Place" Grass**

The Grasses used in making this special mixture are only those that are well adapted for growing in the shade. It may be used on those portions of the lawn which are shaded by trees, buildings, etc. Price, including delivery, 30 cts. per pt.; 50 cts. per qt.; \$1.50 per 4 qts.; \$2.75 per peck. By express or freight at customers' expense, \$5.00 per 1/2 bushel; \$10.00 per bushel (20 lbs.); \$47.50 per 100 lbs.

**Dreer's "Evergreen" Lawn Grass**

This special mixture produces beautiful and permanent lawns. It is made from our own formula, and composed of Grasses which are adapted for the purpose of producing turf which retains its rich green color and velvety appearance throughout the entire season. Price, including delivery, 25 cts. per pt.; 40 cts. per qt.; \$1.25 per 4 qts.; \$2.25 per peck. By express or freight at customers' expense, \$4.00 per 1/2 bushel; \$8.00 per bushel (20 lbs.); \$37.50 per 100 lbs.

**HENRY A. DREER,**

**1306 SPRING GARDEN ST.  
PHILADELPHIA, PA.**